

A quality product from **CENTURYPLY**





PRODUCT CATALOGUE  
VOL 5

**CENTURYEXTERIA**<sup>®</sup>  
Decorative Exterior Laminates

**CENTURYEXTERIA**<sup>®</sup>  
Decorative Exterior Laminates

**CENTURYEXTERIA**<sup>®</sup>  
Decorative Exterior Laminates

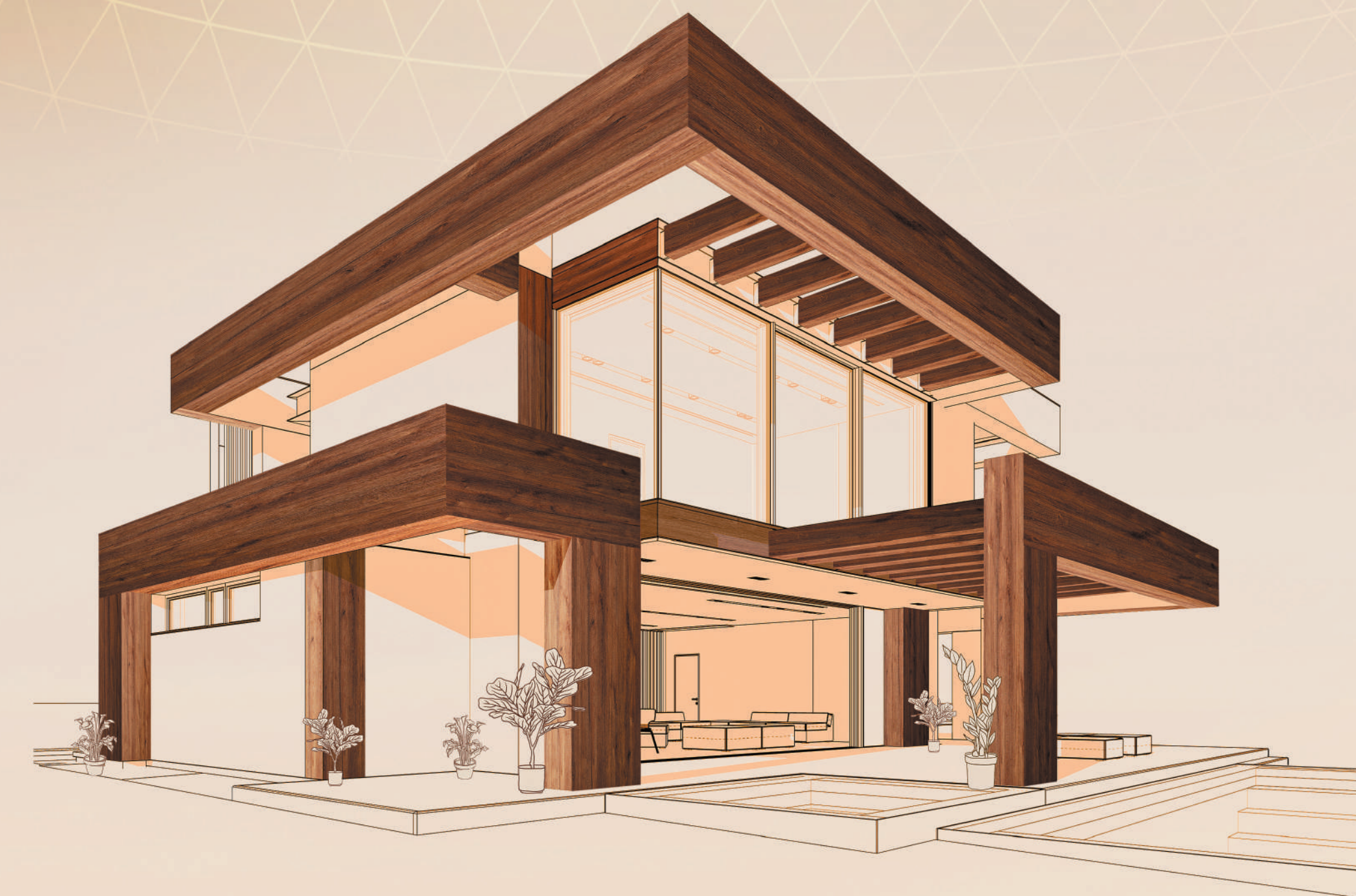
**Century Plyboards (India) Limited**  
Regd. Office: 'Century House', P-15/1 Taratala Road  
Kolkata - 700088, West Bengal (India)  
T: +91 33 3940 3950  
Email: [exteria@centuryply.com](mailto:exteria@centuryply.com) | [www.centuryexteria.com](http://www.centuryexteria.com)

 [CenturyPlyIndia](#)  
 [YouTube Centuryply1986](#)  
 [decorativesbycenturyply](#)  
 [decoratives\\_by\\_centuryply](#)

SMS **CPIL** to **56070** for any queries  
Please call Customer Care at **1800-5722-122**

**CENTURYEXTERIA**<sup>®</sup>  
Decorative Exterior Laminates

FIRST IMPRESSION LASTS  
MAKE IT COUNT.



PRODUCT CATALOGUE VOL 5

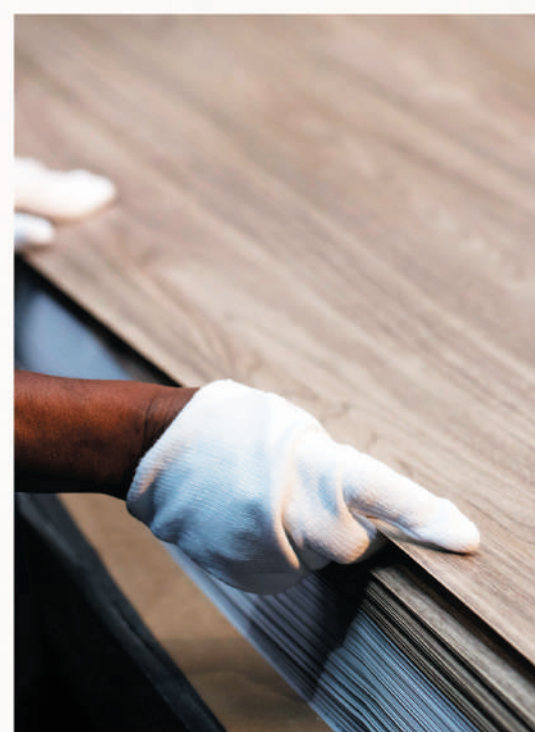


# CONTENTS

CenturyPly – A Name to Reckon With	04
Make a Memorable First Impression with CenturyExteria	05
Salient Features	07
Feature Advantage Benefit	09
There's a CenturyExteria for Everything	11
The Woodgrains Collection	13
The Stones & Abstracts Collection	25
The Solids Collection	33
Earthy Solids Collection	37
Fixation Systems	39
Project Gallery	41
Care & Maintenance	71
Storage & Handling	71
Credentials	72
Design Index	73
Technical Data Sheet	74
Our Presence	75







## CENTURYPLY A NAME TO RECKON WITH

CenturyPly commands an undisputed superiority in the Indian market, as a bestseller in plywood, decorative laminates and veneers. The brand's constant explorations, transformation and progress have helped it find its way into elegant homes, with a loyal customer base across the country.

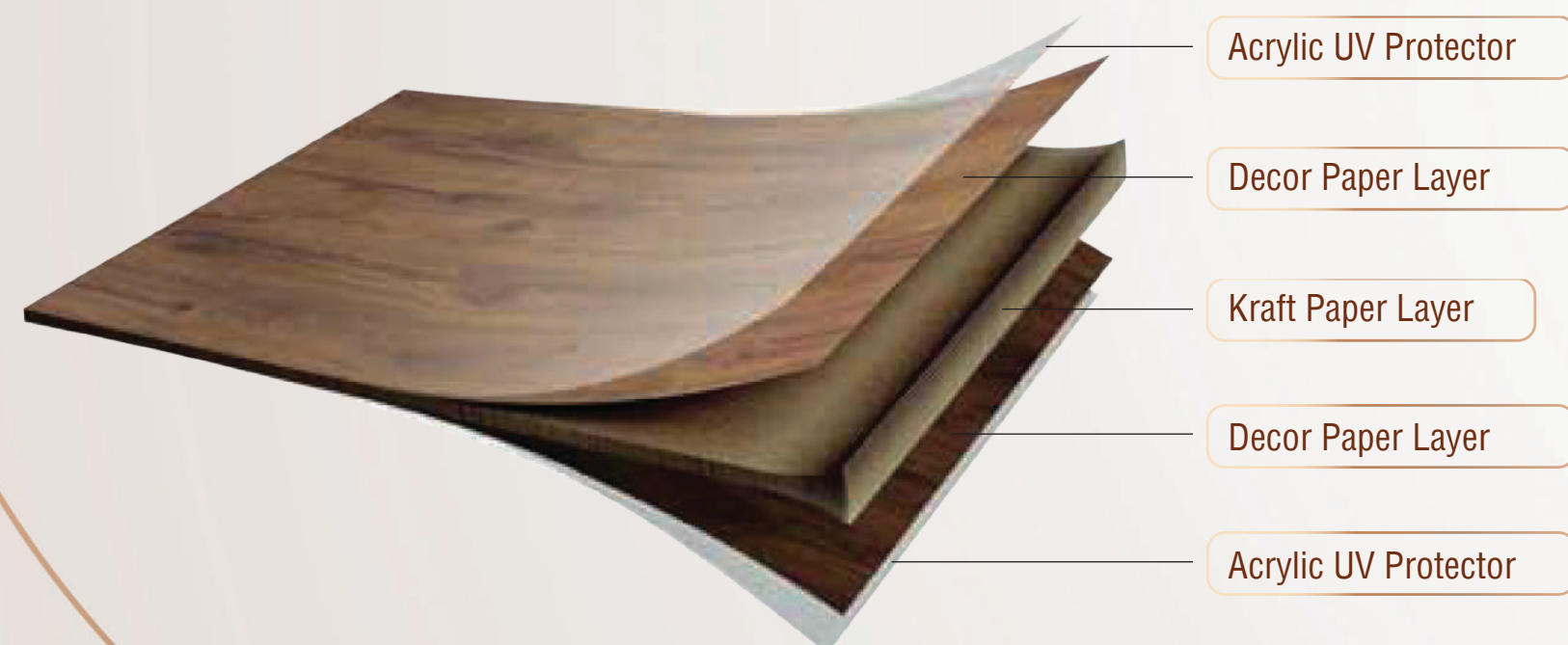
In 1986, two entrepreneurial trailblazers Mr Sajjan Bhajanka and Mr Sanjay Agarwal laid the foundation for Century Plyboards (India) Ltd. (CPIL). Today, the enterprise creates millions in business and garners the respect of several million happy customers.

CenturyPly is also the numero uno choice of architects and interior designers who suggest the brand to home-owners all over India. The brand and its proud ambassadors have been pivotal in the transformation of mundane structures into interesting properties with magnificence and cosiness.



# MAKE A MEMORABLE FIRST IMPRESSION WITH CENTURYEXTERIA

## PANEL CONSTRUCTION



Acrylic UV Protector

Decor Paper Layer

Kraft Paper Layer

Decor Paper Layer

Acrylic UV Protector

The first impression that a home creates on an onlooker is how it looks from the outside. The exterior façade is therefore the best place for a homeowner to really make a style statement, a statement that stands out and becomes the talk of the town.

And CenturyExteria, with its range of exterior-grade, high-pressure laminates in dynamic designer shades, patterns and solids, make the exteriors of a building truly eye-catching and inviting. The uber cladding solutions from CenturyExteria also impact the temperature of the rooms and the whole building, thereby reducing the energy consumption for cooling systems. They are therefore a proportionate mix of

functionality, design optimisation and aesthetics.

CenturyPly's local manufacturing facility in India makes a significant contribution to the brand's robust logistics systems, thereby guaranteeing timely deliveries for projects with tight deadlines. Furthermore, the beauty and strength inherent in each design empower you to create a durable and aesthetically pleasing outcome.



Try out how this home looks with some of our CenturyExteria Laminates!



# SALIENT FEATURES



HIGHLY UV RESISTANT

MOISTURE & THERMAL CONTROL



IMPACT RESISTANT

SCRATCH RESISTANT



SEEPAGE PROOF

10 YEAR WARRANTY\*



COLOUR STABLE

LOW MAINTENANCE



DOUBLE SIDE DECORATIVE

BENDING RESISTANT



DOUBLE HARDENED

EASY & RAPID INSTALLATION



SUITABLE FOR ALL EXTERIOR  
& VERTICAL APPLICATIONS

SELF-SUPPORTING



\*Condition apply



## VENTILATED FACADE SYSTEM

CenturyExteria panel cladding is a ventilated facade system that eliminates moisture problems due to internal condensation of water, ensuring an improved comfort for indoors. The drainage of rainwater, entering through the ventilation gaps between panels, is carried out through the ventilation outlets. Another major benefit of CenturyExteria cladded walls is that they reduce the mechanical stress in the main structure; hence it is the most feasible solution for rehabilitation of aging building exteriors.



## FIRE SAFETY

CenturyExteria panels have the property to reduce the fire spread intensity when it is exposed to fire and retain their stability for a long time. This has been tested and approved by authorised testing bodies in India and abroad. CenturyExteria products fall within one of the most authentic fire retardant class rating (Class-I), as per BS 476 part#7. This product has also secured Class A rating as per ASTM E84-13a Std., with a F.S.J. value as 15 & S.D.I. as 350.



## TOUGH

The suitable modulus of rupture, high tensile and flexural strength make CenturyExteria panels highly impact resistant. The homogeneity in the composition and density of the core ensure high pull-out strength for fixings or fasteners, which is especially important when the panel is invisibly fixed with anchors. Not only this, the dimensional stability and workability of CenturyExteria panels are comparable to those of hardwood. These can be easily processed, cut, sized, drilled and perforated. These are also not affected by moisture and are not susceptible to weathering or rot.



## COLOUR STABILITY - OPTIMAL LIGHT FASTNESS

Colour Stability of the vertically applied decorative surface of CenturyExteria panels comply with the highest score classification- 5 measured with the grey scale according to EN 438-6. The colours of CenturyExteria panels would have a very minimal effect (almost no considerable shade fading) in the most severe climatic conditions, under direct contact of UV rays and even in heavily polluted industrial locations.



## WEATHER PROTECTION

The specially designed weather-proof acrylic film on the both sides of the panels are invincible against heavy rains, storms, harsh sunlight, scarring dusts and ensure indomitable protection against UV rays.



## TEMPERATURE RESISTANCE

CenturyExteria panels can withstand temperatures ranging from -20 c to +80 c, making it the most suitable exterior cladding option for any kind of climatic condition, whether it be chilling frosty weather or scorching heat.



## ACOUSTIC RESISTANCE

CenturyExteria panels have ventilated facade systems which tend to influence the function of external noise reflection and behave as a sound insulating system (due to a high level of acoustic resistance of CenturyExteria panels), providing a considerable reduction in noise levels in commercial or institutional spaces like hospitals, office building, hotels and schools located in heavy traffic areas.



## THERMAL INSULATION

Ventilated facade systems by CenturyExteria panels ensure natural ventilation and reduce the amount of heat that the building absorbs in hot weather. This helps in achieving a considerable reduction in air conditioning costs in summers, thereby proving to be an ideal exterior cladding solution with an attractively low payback period.



# FEATURE ADVANTAGE BENEFIT

CenturyExteria comes with a wide range of advantages, which translate into marvellous benefits for the homeowners.

Exteria shades are Blue-Wool Scale#8 Compliant and Century uses only European/Japanese deco papers to manufacture Exteria panels.

Therefore,  
**Exteria panels do not fade**

And this means great benefits for customers -

"My building will remain beautiful for a long time."

"I won't have to invest further in the exterior of my building for at least the next 10-15 years."

"No more chasing fabricators or masons to fix the exterior of my building again and again!"



Exteria panels have EN 438 (P - VI) Class 1 Fire Safety Rating and also have a Class A fire safety rating as per ASTM E84.

Therefore,  
**Exteria panels don't catch fire easily**

And this means great benefits for customers -

"Fire incidents won't harm my building easily. So, I won't have to spend large sums of money for repairs."

"The presence of fire-resistant materials creates a sense of security in our minds, which makes us all feel very safe at home."



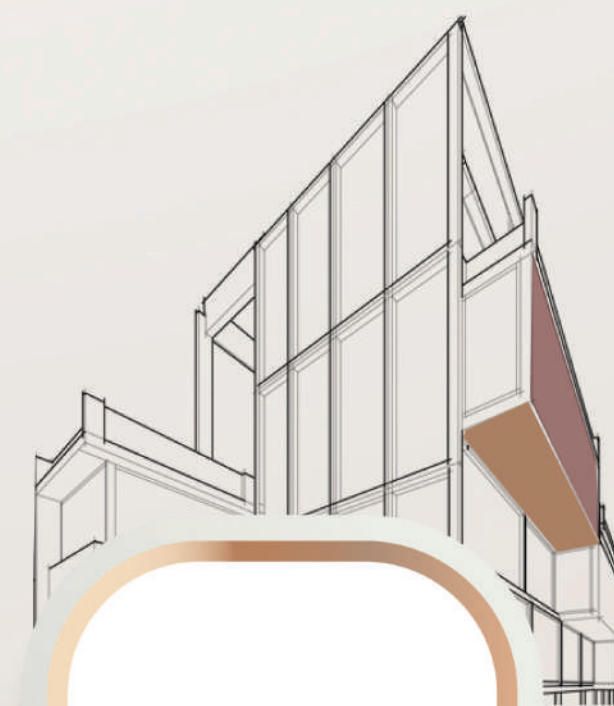
Exteria panels have a density of 1.45 gm/cm<sup>3</sup> and Resistance to impact by large diameter ball of Exteria is  $\geq 2000.00$  mm.

Therefore,  
**Exteria panels are strong & sturdy**

And this means great benefits for customers -

"My building will always be protected and its structural health will remain first class."

"I'm sure that my building's financial value will increase in the future because of the well-maintained and protected façade."



Exterior panels adhere to the dry cladding installation processes.

Therefore,  
**there's an air cushion between the civil construction and the façade**

**The façade can look like wood, stone, cement, metal, marble, granite or other materials**

**Exteria panels can be installed easier and faster compared to a wet cladding material**

And this means great benefits for customers -

"My home will remain cooler during summer and warmer during winter!"

"My electricity bills will be lesser than others, and this means I will have more savings in the long term."

"I know that my building will look so attractive that it will be the talk of the town!"

"It's great to know that my building will remain clean throughout the installation process and even after it!"

"I can move back home very soon as the installation process doesn't take too long."



# THERE'S A CENTURYEXTERIA FOR EVERYTHING

Much like how different elements collectively shape your first impression, you can embellish various parts of your building's exterior to reflect your sense of style. CenturyExteria provides various applications to assist you in accomplishing this, with some of them detailed below.



VENTILATED FACADE | FENCE, RAIL & SCREEN  
PEDESTRIAN SHELTER | DUCT COVERING | AWNING  
PARTITION | SIGNAGE | LETTERING

KIOSK | PREFAB HUT | CANOPY | GATE CLADDING  
HIGHLIGHTER | LOUVRE | ROOF CLADDING  
SOFFIT | BALCONY CLADDING  
SLIDING SHUTTER | PARAPET



# THE WOODGRAINS COLLECTION

A carefully curated collection of **Woodgrains** shades which effortlessly merges the allure of natural beauty, infusing the facades with the rustic charm found in forests and leaving a lasting first impression.







NEW

BORAS ASH 609



NEW

BELGIAN CEDAR 555



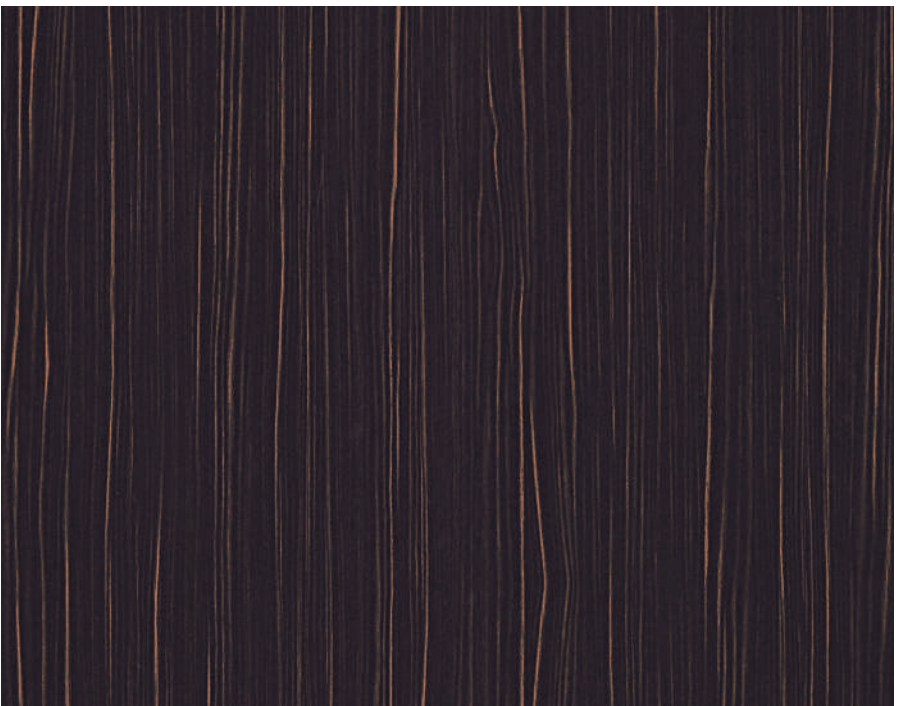
TYROL PINE 3531



WILD ZEBRANO 784



WILD PEAR 403



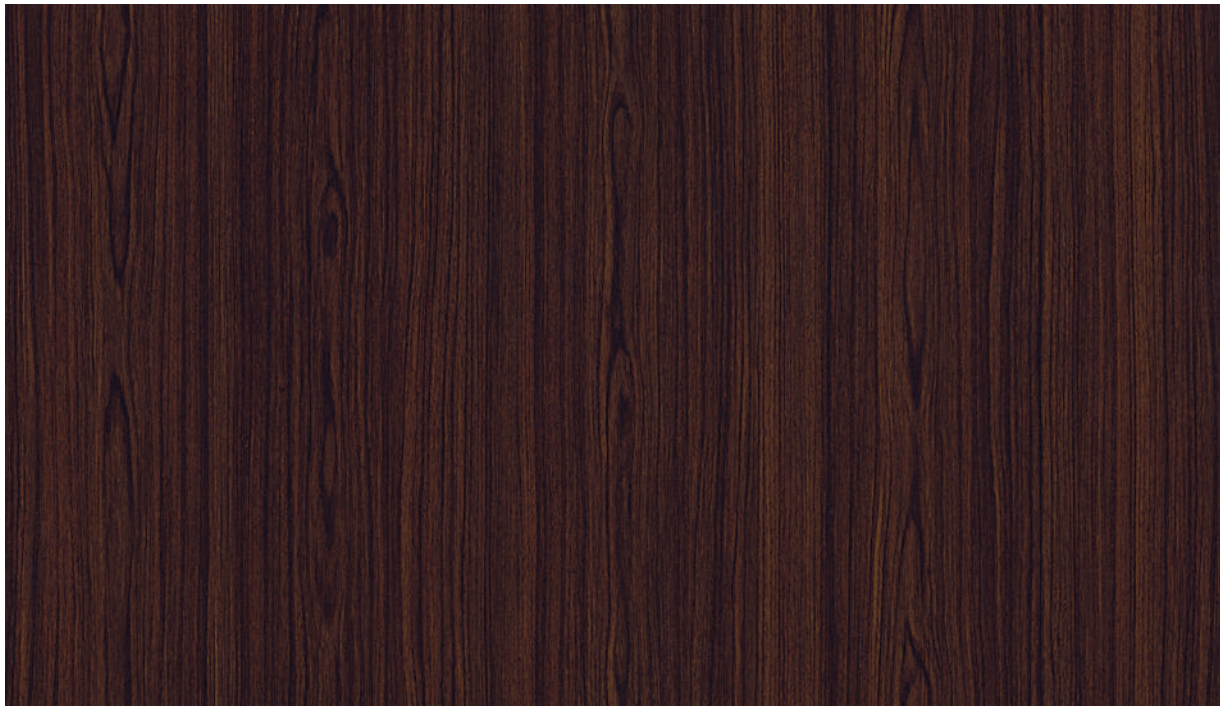
ZEBRA WOOD 787



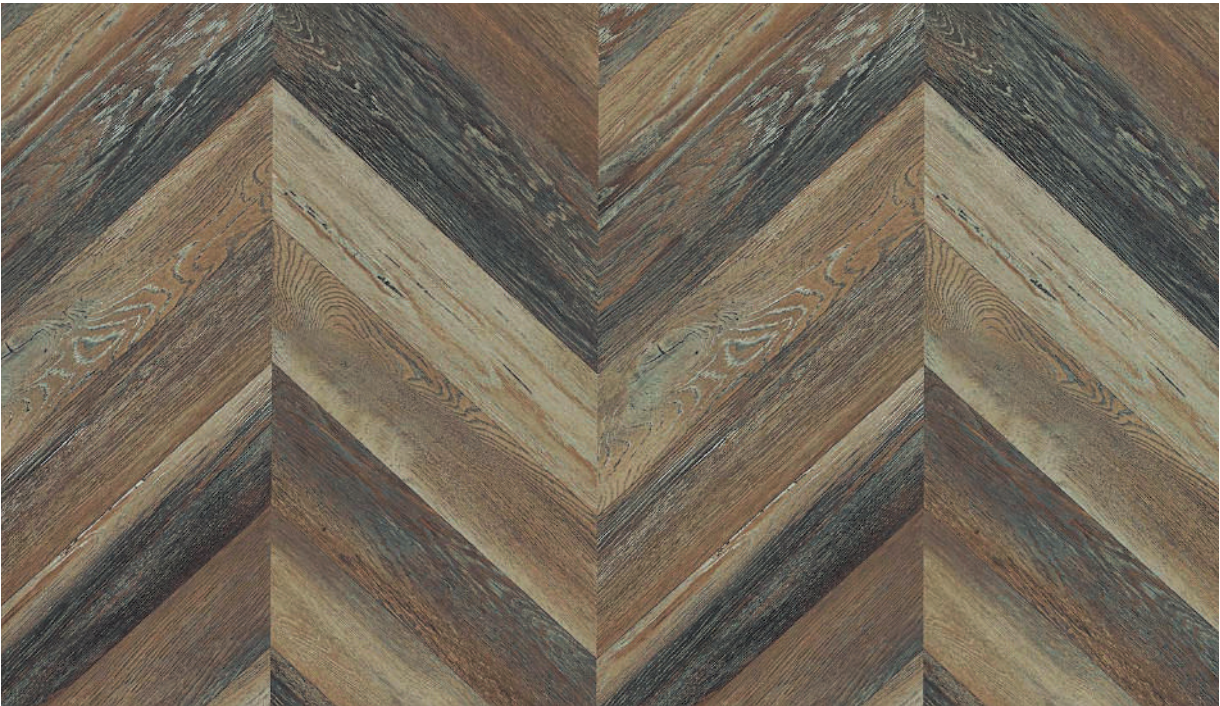
THE WOODGRAINS  
COLLECTION



HASTINGS SANDALWOOD 738



NYANA ROSE 494



KOHI VISGRAT 4655



GURE VISGRAT 4656



THE WOODGRAINS  
COLLECTION



BAVARIAN ASH GREY 3594



PRETTY WOOD 688



PYRUS OSCURO 3408

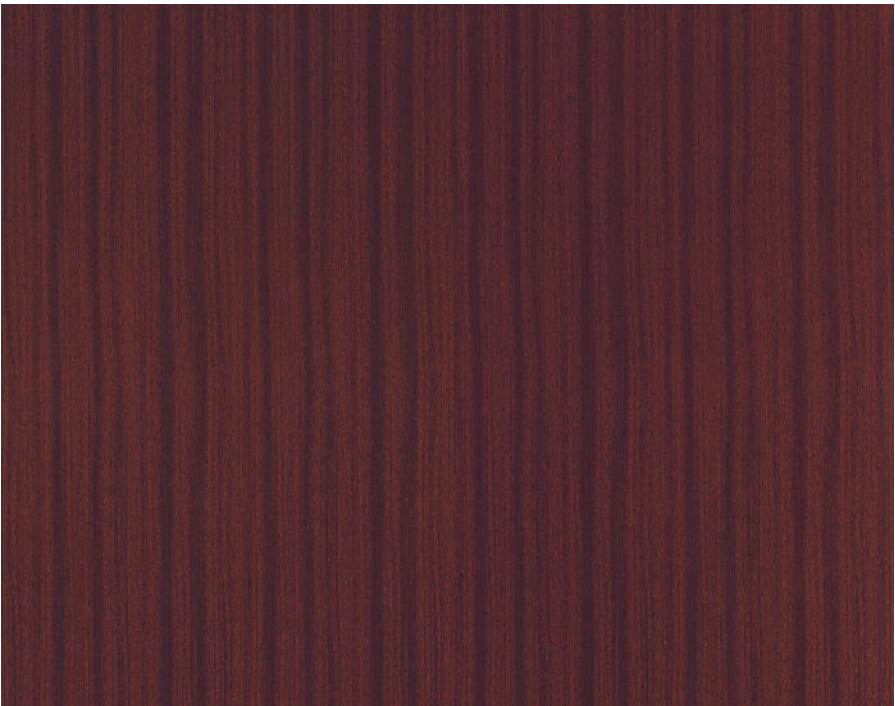


CLARO MAPLE 3342

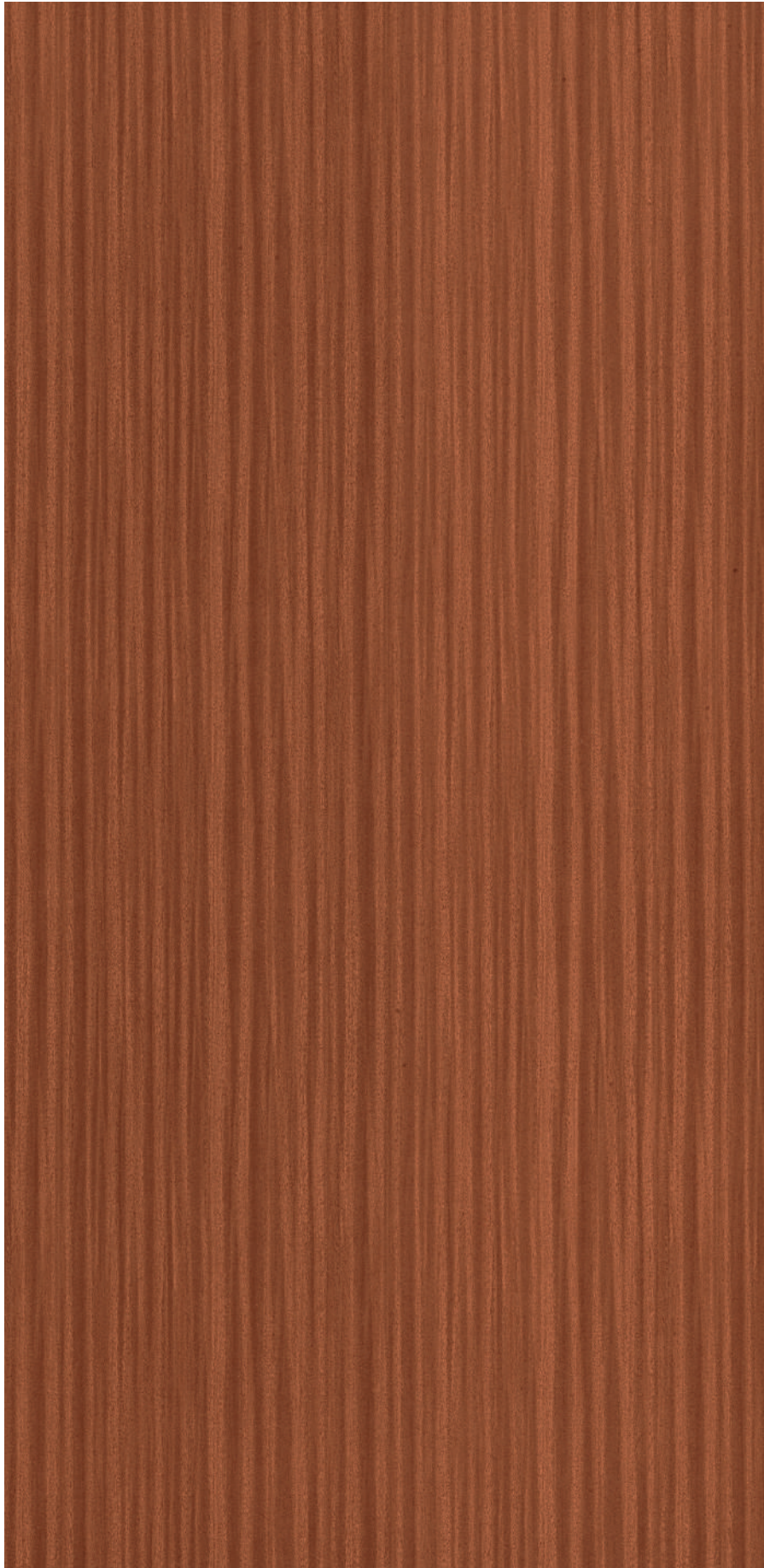




CHERRY BEECH 321



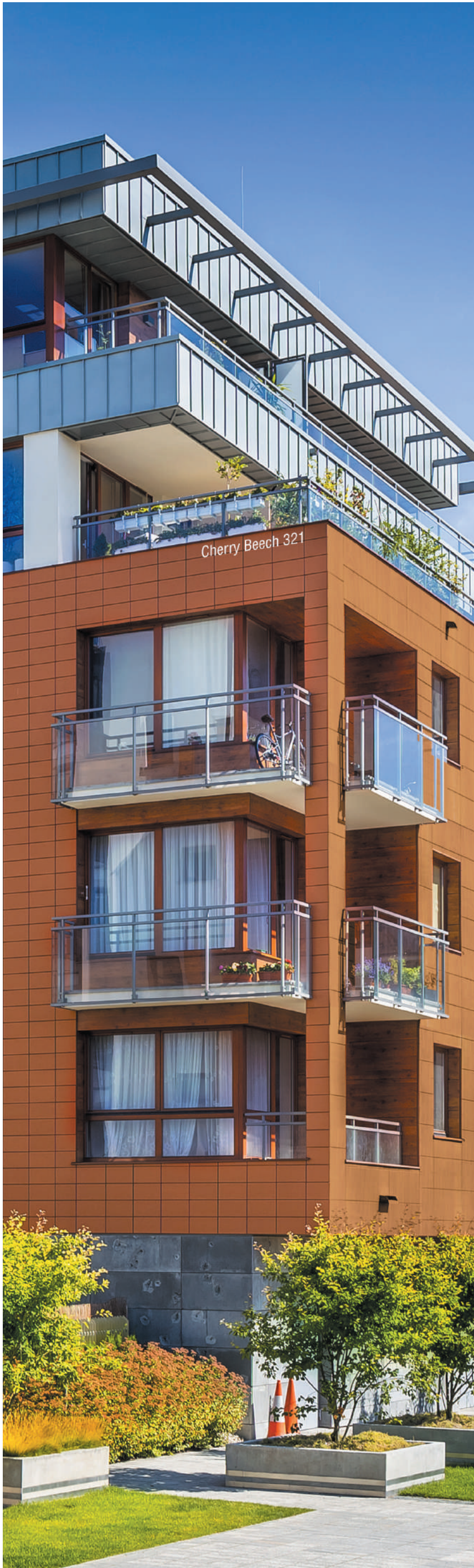
MAHOGANY 468



SAPELE 541



SUKUPIRA PRADO 639



SAMOA TEAK 456



NYANA TEAK 464





NEW

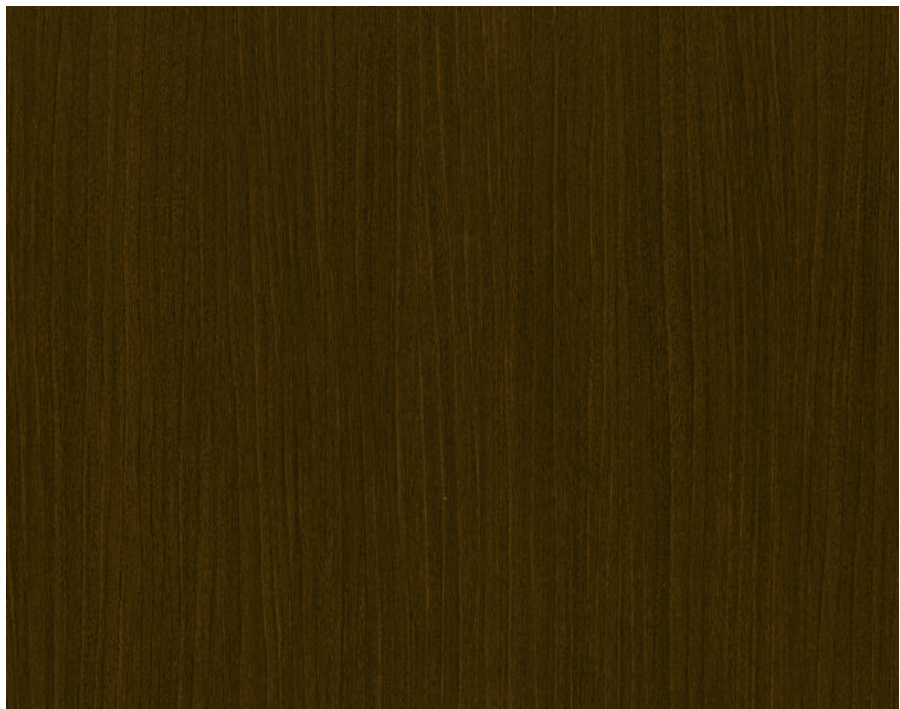
BUNRATTY OAK 4683



OAK NOMADA 3639



NAMBIA OAK 4664

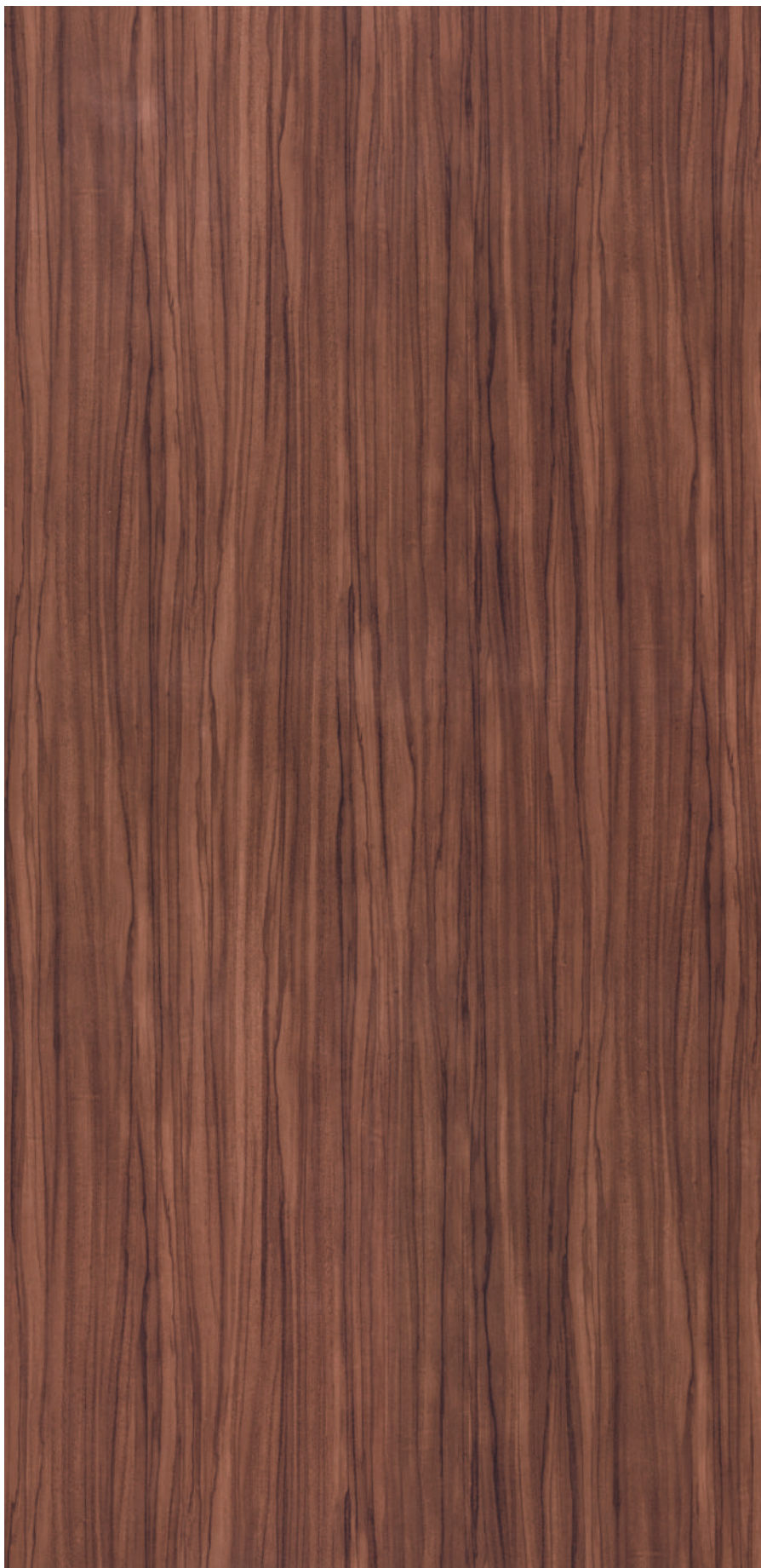


AFRICAN OAK NOIR 3743



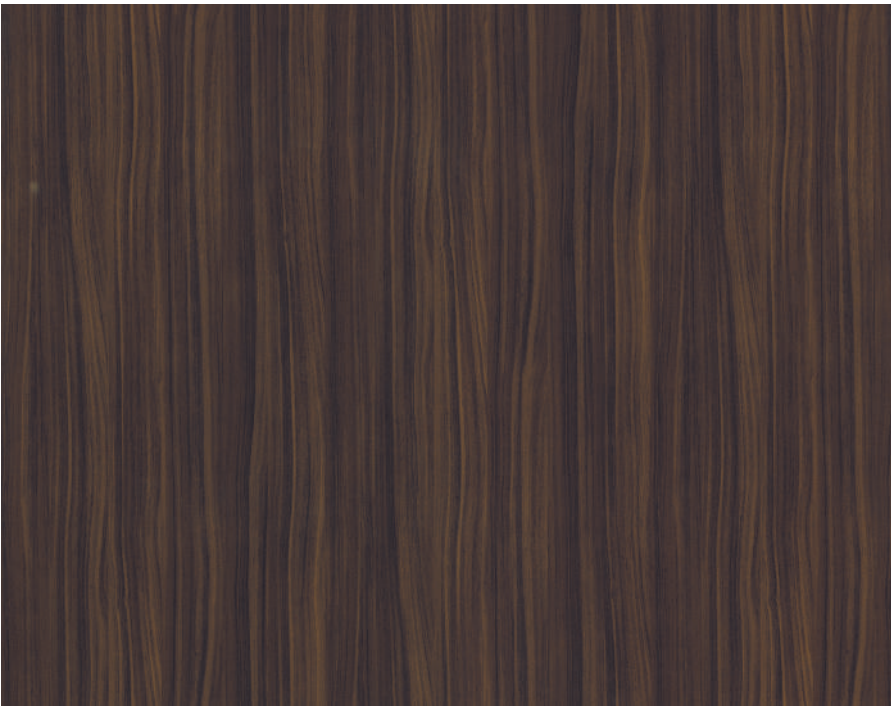
NEW

PEMENANG WALNUT 4523

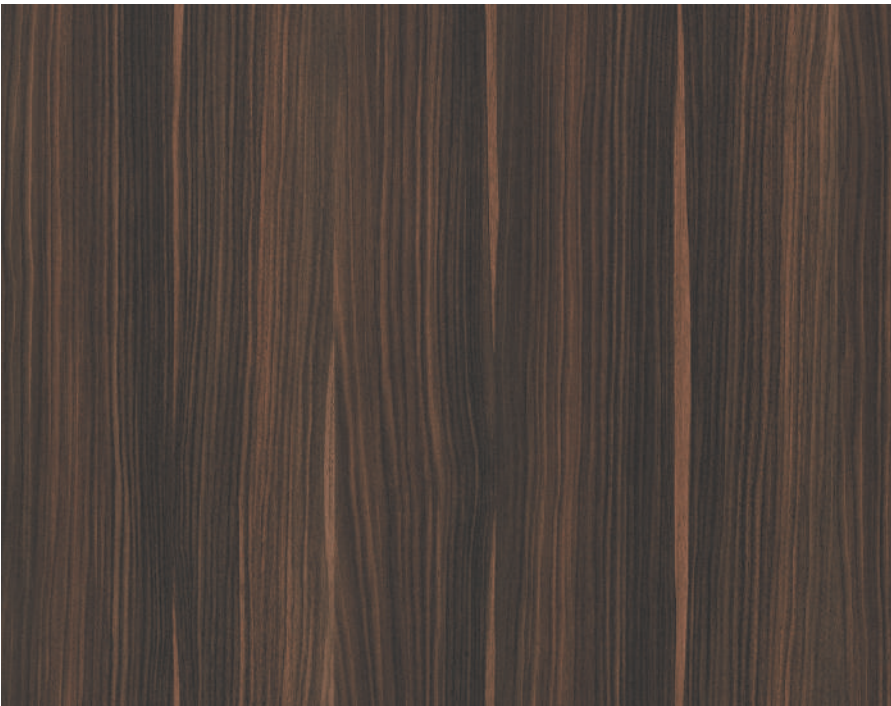


RECLAIMED WALNUT 419





DECO WALNUT DARK BROWN 3418



SAPWOOD WALNUT DARK BROWN 3425



DECO WALNUT LIGHT BROWN 3419



LEPING WALNUT 4527



MARINE WALNUT 657



ERMANNOWALNUT 424

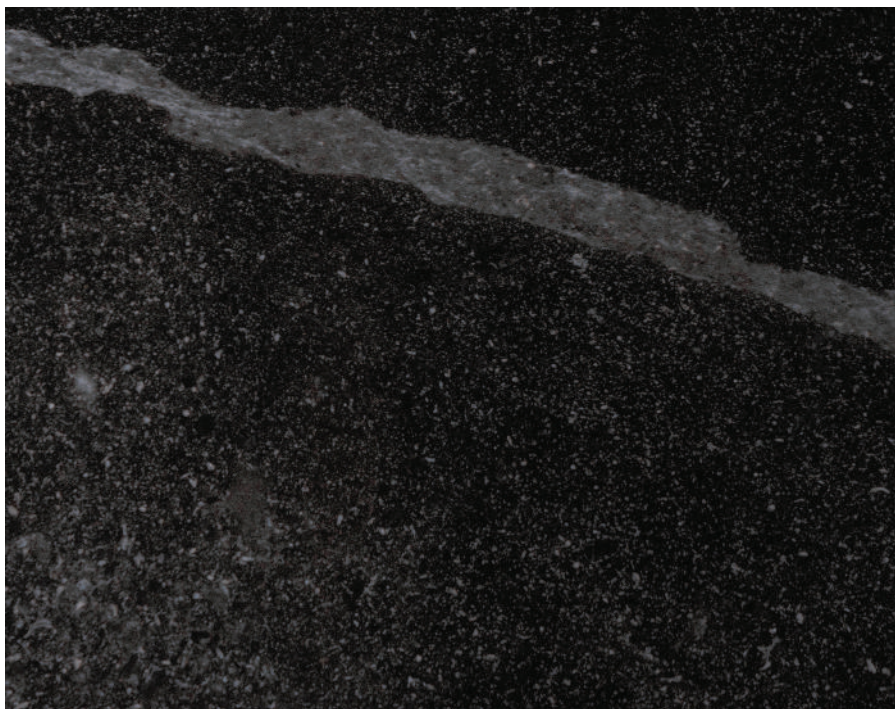


# THE STONES & ABSTRACTS COLLECTION

Our **Stones & Abstracts Collection** brings the robustness and naturally rugged beauty of stony hues and textures to your façades. This makes them stand out and create a first impression that people just can't forget.







SUPERNOVA 4842



STEEN CEMENT 3819



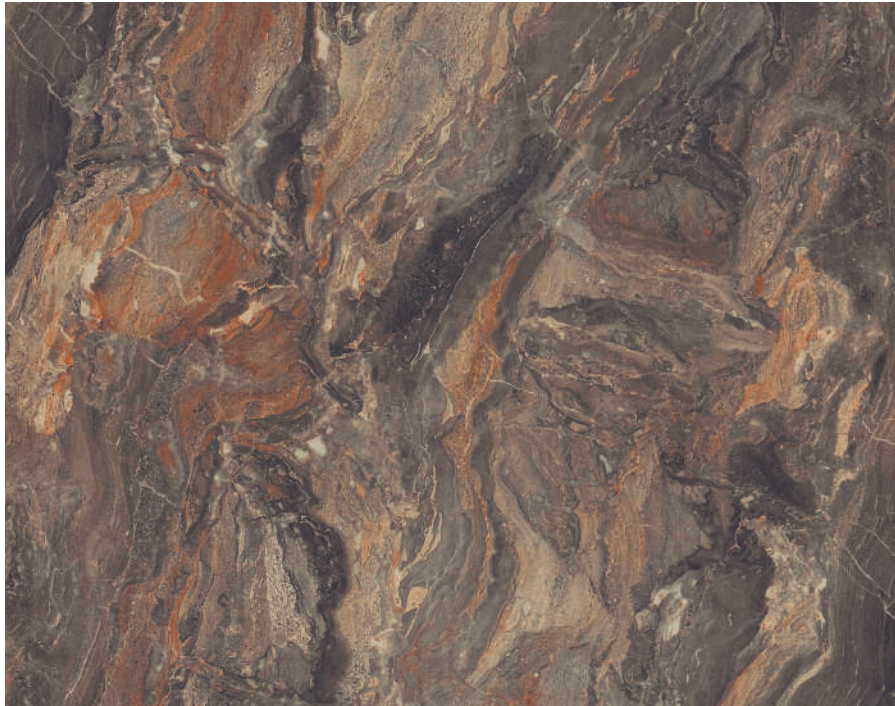
SAHARA 3809



STELLARNOVA 4841



THE STONES  
& ABSTRACTS COLLECTION



PARDO REYRA 3802



RUSTICO 3896



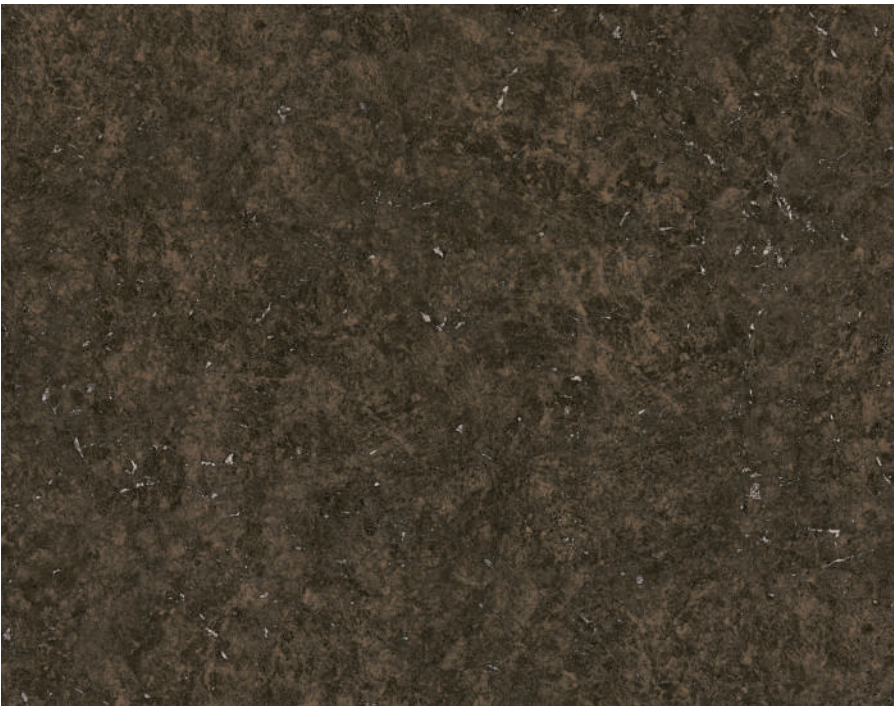
TULA SILVER 4867

THE STONES  
& ABSTRACTS COLLECTION



NEW

MOCHA 3893



GRANUM TAUPE 3835



BARK STONE 3836







SAGRADA MARBLE 3852



GOTHIC MARBLE 3853



NEW

MOONLIT CHARCOAL 3894



SIERRA MARBLE 3854



WHITE MARBLE 3846





# THE SOLIDS COLLECTION

The shades in our **Solids collection** are inspired by blocks of monotone hues, and they lend both proportions as well as an element of vastness to structures that would have otherwise looked visually weightless. This goes a long way in adding uniqueness and robustness at the same time, while also making a stand out first impression.

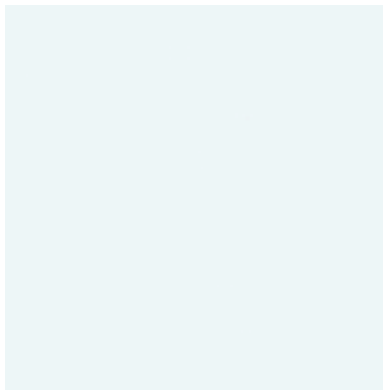




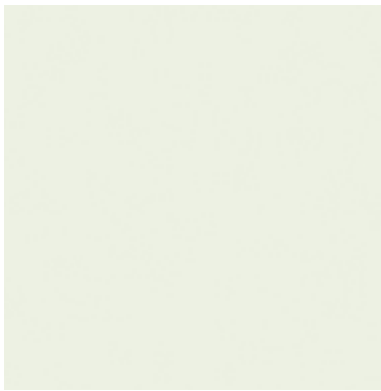
THE SOLIDS  
COLLECTION



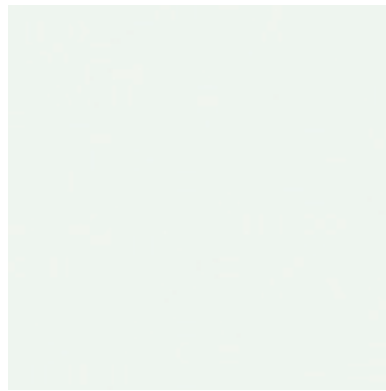
WHITE 101



SNOW WHITE 107



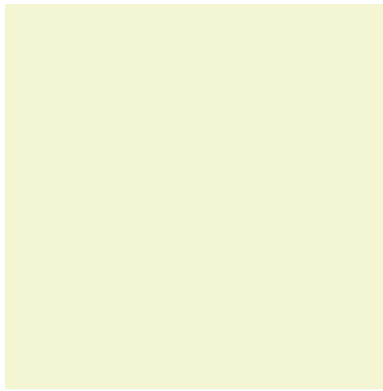
OFF WHITE 108



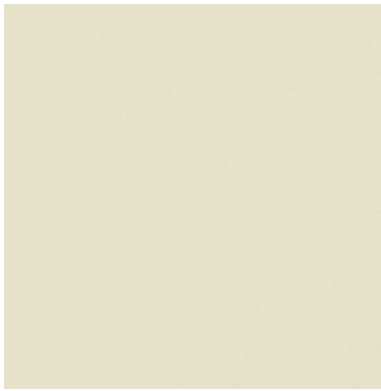
DESIGNER WHITE 109



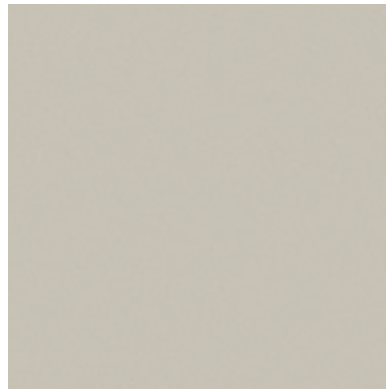
IVORY 121



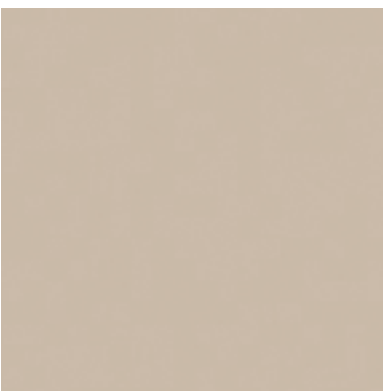
MYSORE IVORY 125



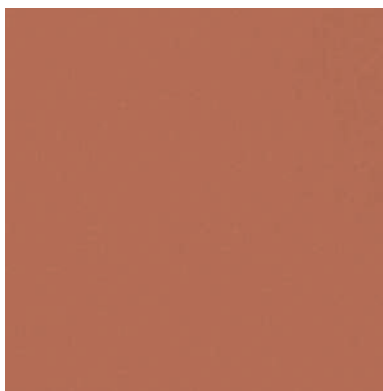
ALMOND IVORY 127



TAUPE 158



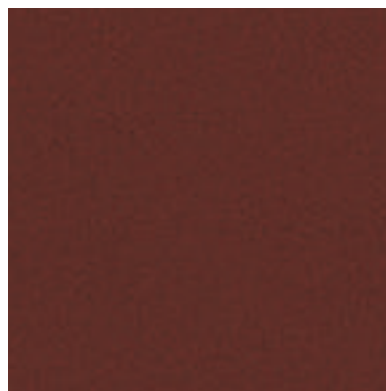
LIGHT BEIGE 161



PEACH 165



MUDDY MUSHROOM 172



VINTAGE BURGUNDY 181



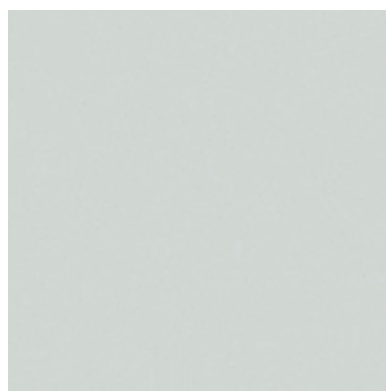
TAWNY 202



GLAZE YELLOW 208



EQUINOX YELLOW 209



LIGHT GREY 221



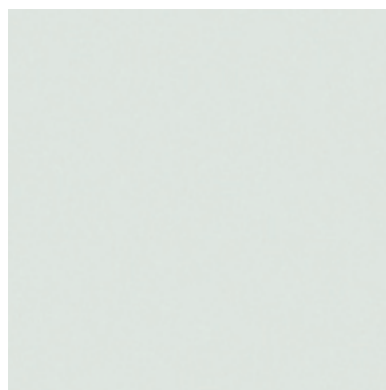
SILVER GREY 225



WARM GREY 226



MOON GREY 227



ALLU GREY 228

THE SOLIDS  
COLLECTION



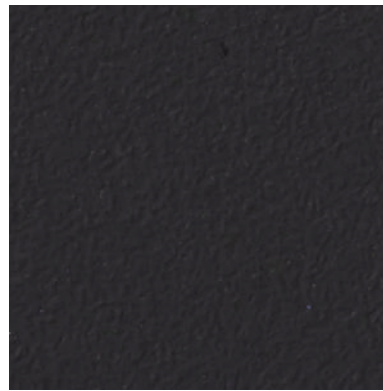
GREY 231



BLUISH GREY 234



GRAPHITE GREY 238



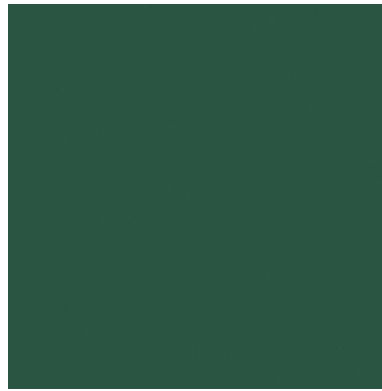
CONCRETE GREY 323



DESERT GREEN 274



PISTA GREEN 276



STEEL GREEN 281



HAWAIIAN GREEN 287



SKY BLUE 243



BLUE 245



NAVY BLUE 249



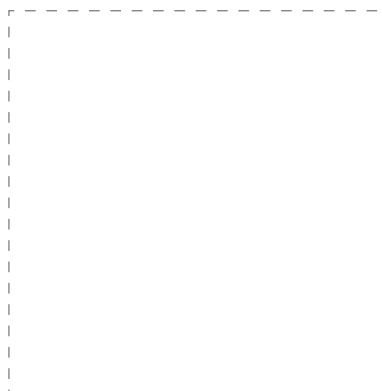
DAWN BLUE 259



NEW



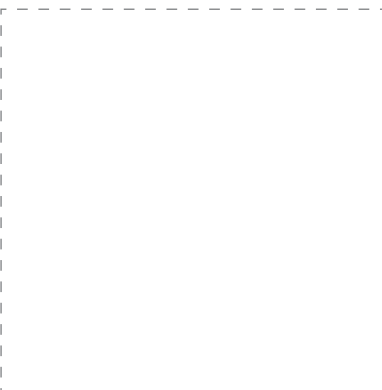
NEW



NEW



NEW



NEW



NEW



NEW



NEW



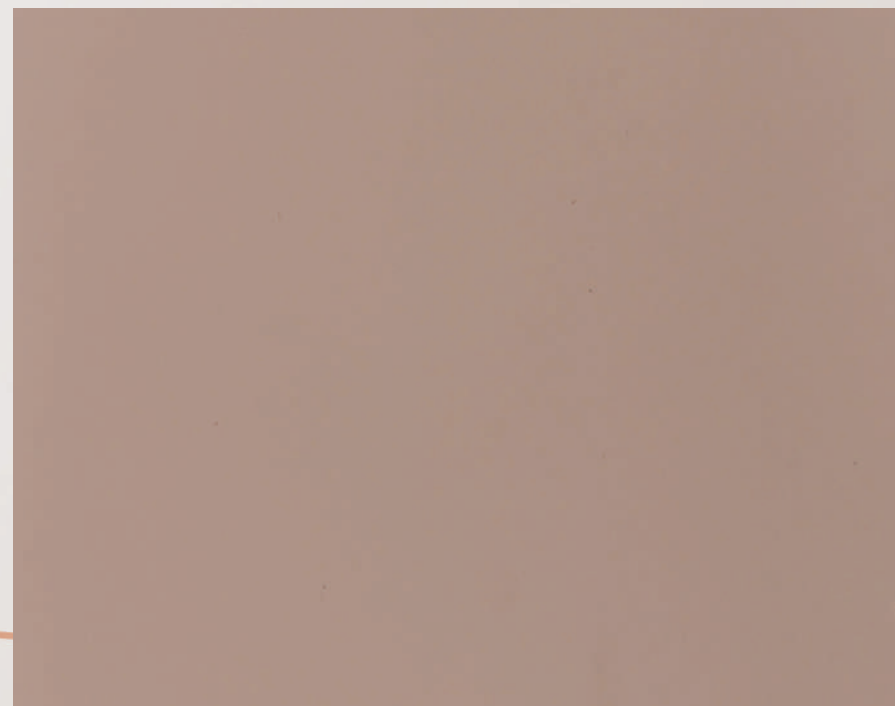
## EARTHY SOLIDS COLLECTION

Our Earthy Solids Collection draws inspiration from the elements of nature. The collection lets you reconnect to your roots and adds warmth to your designs. The new outdoor trend gives your home or office a palette that is natural and organic.



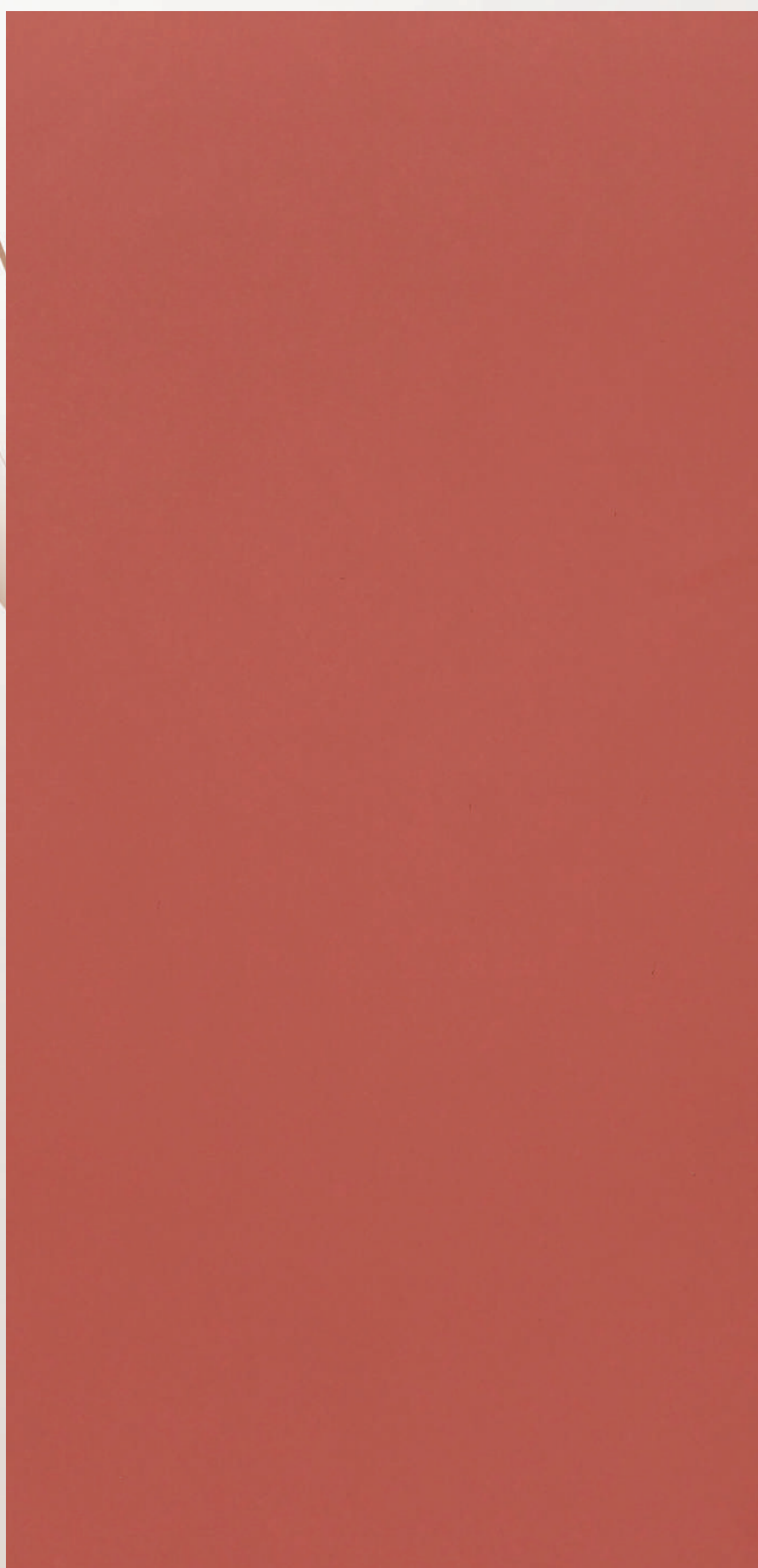
NEW

CAMEL 178



NEW

BRAZILIAN SAND 168



NEW

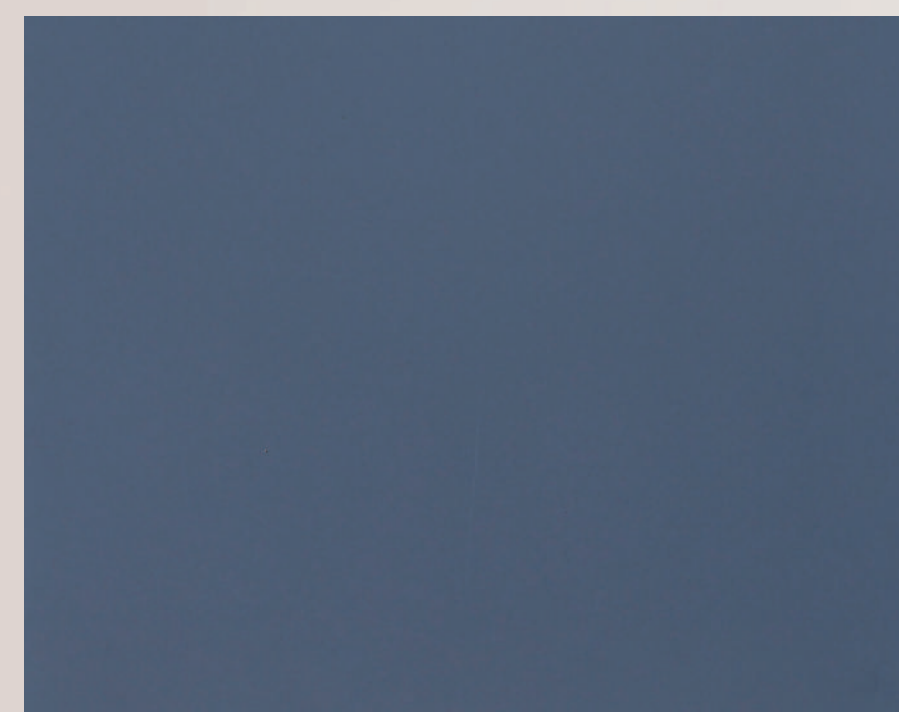
PUNCH 153



NEW

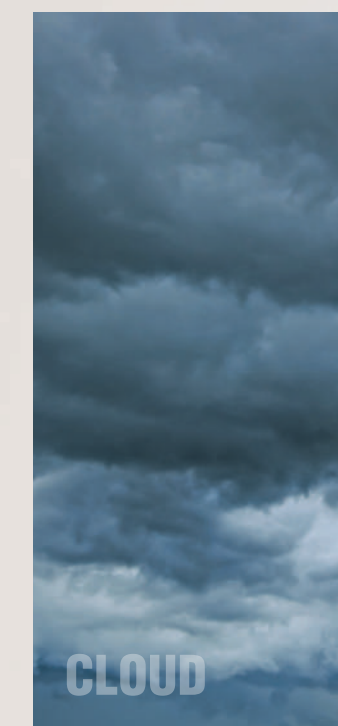
ARCTIC BLUE 3245

ICE FLOE



NEW

FLINT 3246



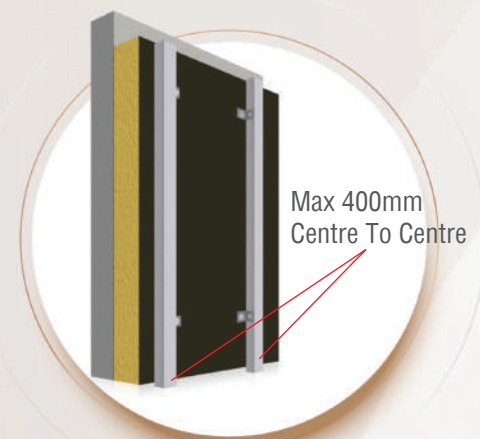


## FIXATION SYSTEMS

### Adhesive Fixation System

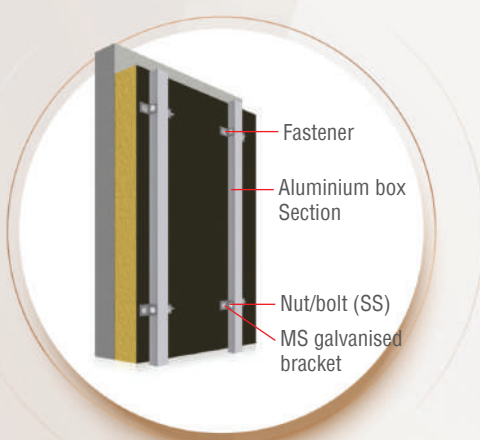
#### STEP 1

Assembling of M.S. galvanised bracket and fasteners on load bearing structure.



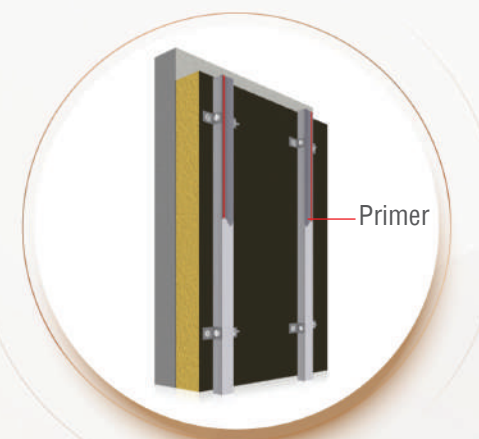
#### STEP 3

Assembling of S.S. nut bolt to fix aluminium extrusion with M.S. galvanised bracket.



#### STEP 2

Assembling of S.S. nut bolt to lock aluminium extrusion from M.S. galvanised bracket and application of recommended primer.



#### STEP 4

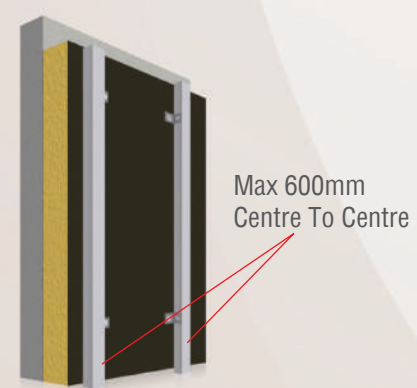
Fixing of coloured aluminium rivet on the panel.



### Rivet fixation system

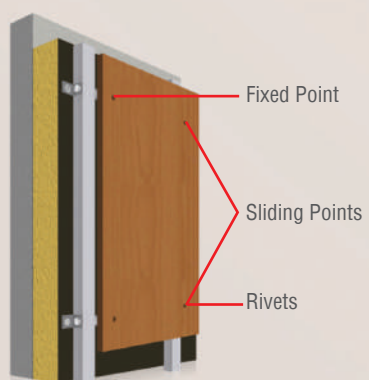
#### STEP 1

Assembling of M.S. galvanised bracket and fasteners on load bearing structure.



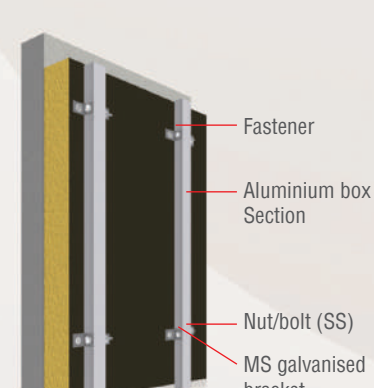
#### STEP 3

Detail of fixed point and sliding points on the panel.



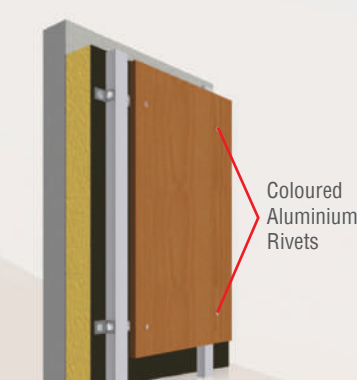
#### STEP 2

Assembling of S.S. nut bolt to fix aluminium extrusion with M.S. galvanised bracket.



#### STEP 4

Fixing of coloured aluminium rivet on the panel.



### Other fixations



Undercut concealed fixation



Undercut concealed fixation with joint connector



'h'-clip concealed fixation



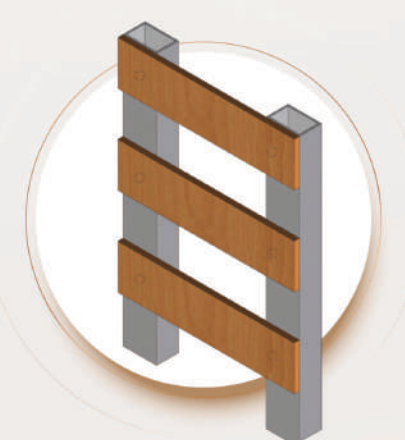
Overlap fixation



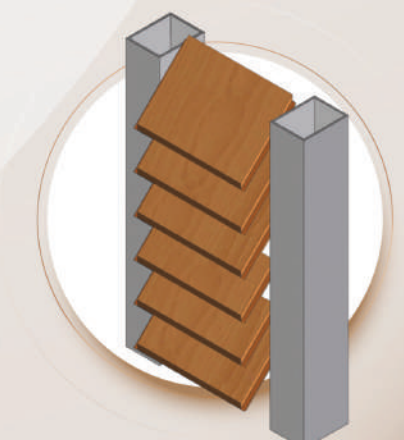
Rainwater drainage fixation



Shiplap fixation



Duct cladding



Louvre cladding

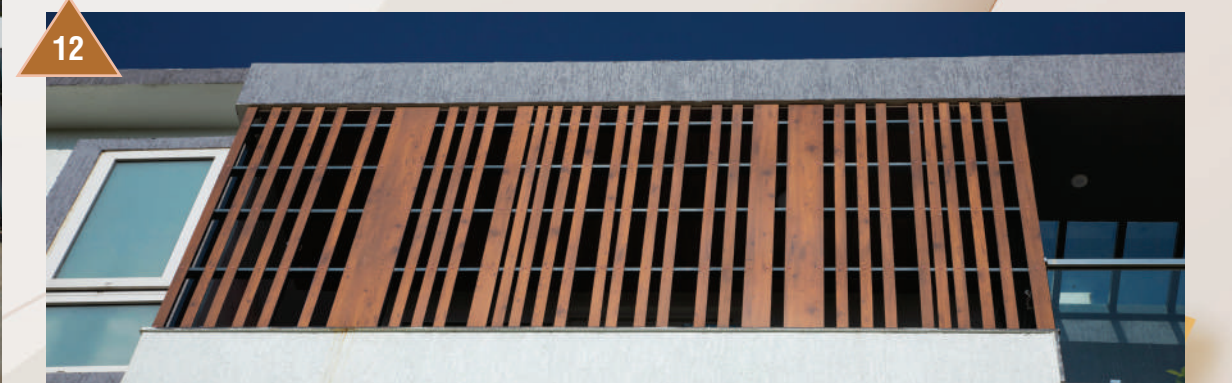


## PROJECT GALLERY

CenturyExteria has undertaken and successfully completed some of the finest projects in both the commercial and residential sectors. The use of CenturyExteria has resulted in a significant transformation of both the structures they are applied to and the overall landscape of the area.

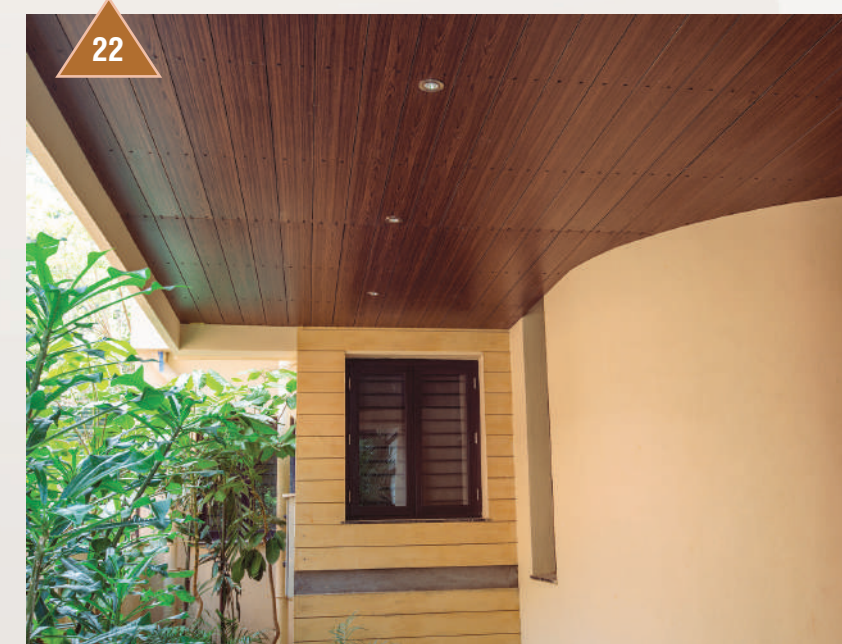
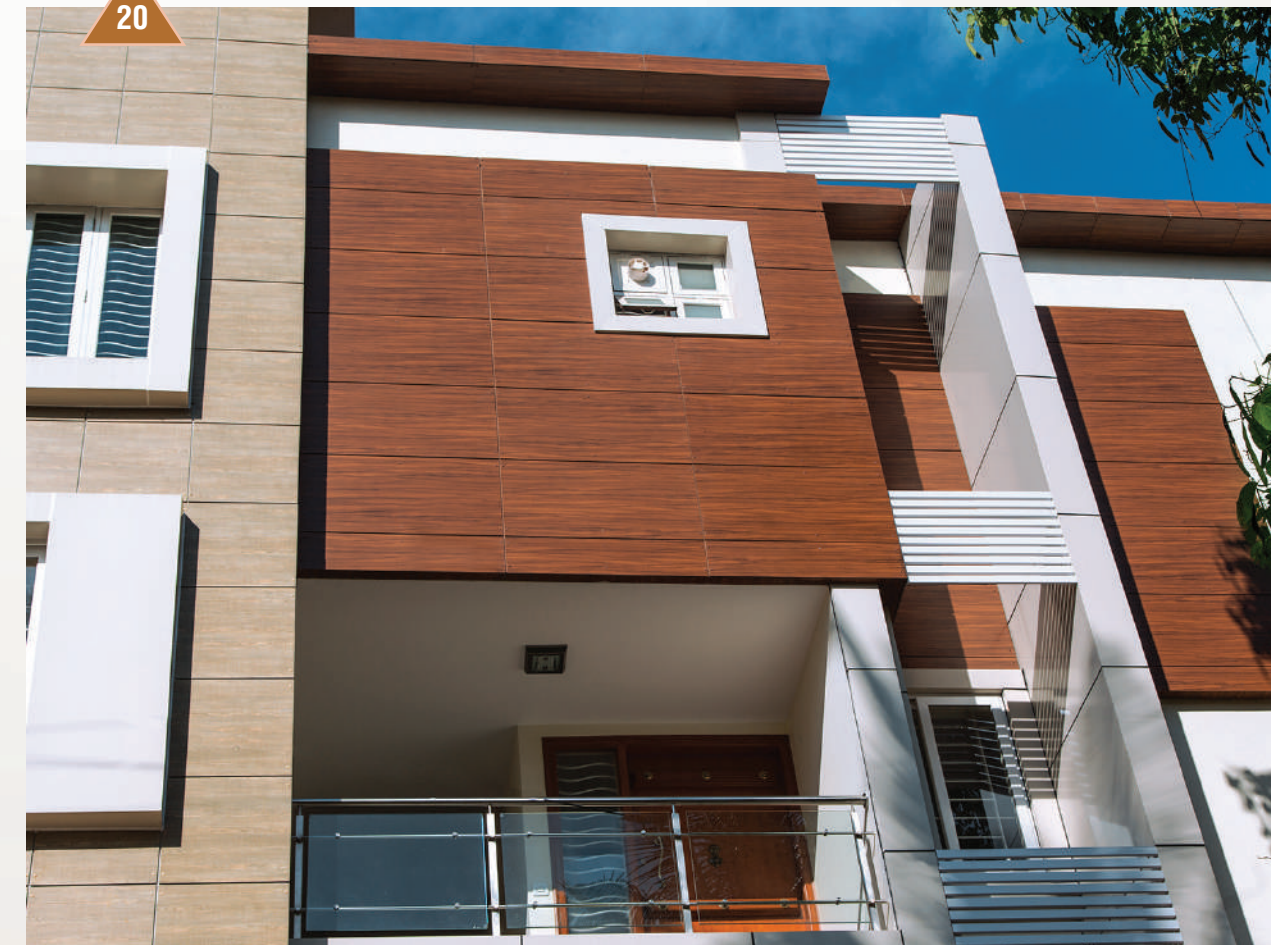
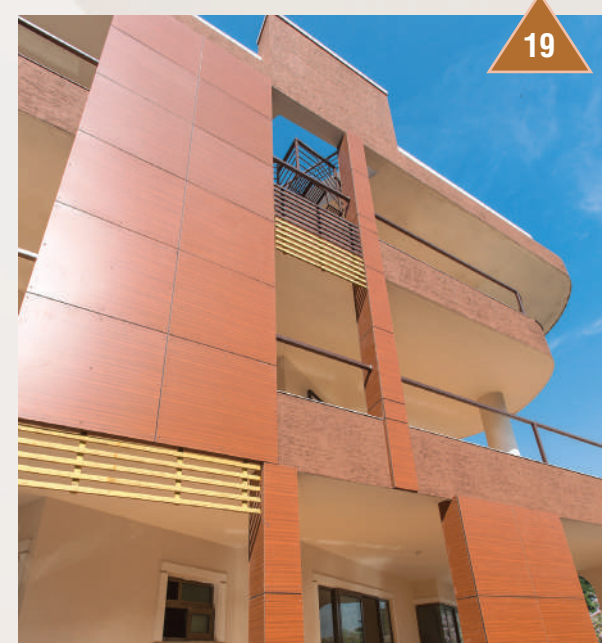


# RESIDENTIAL



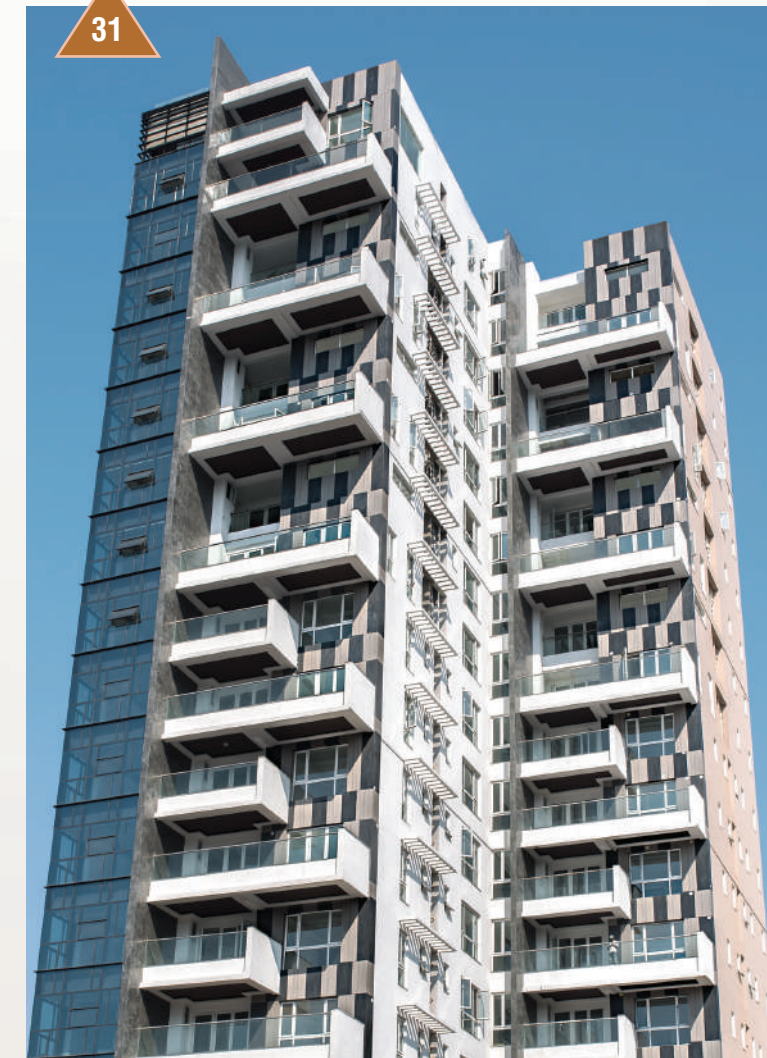


# RESIDENTIAL



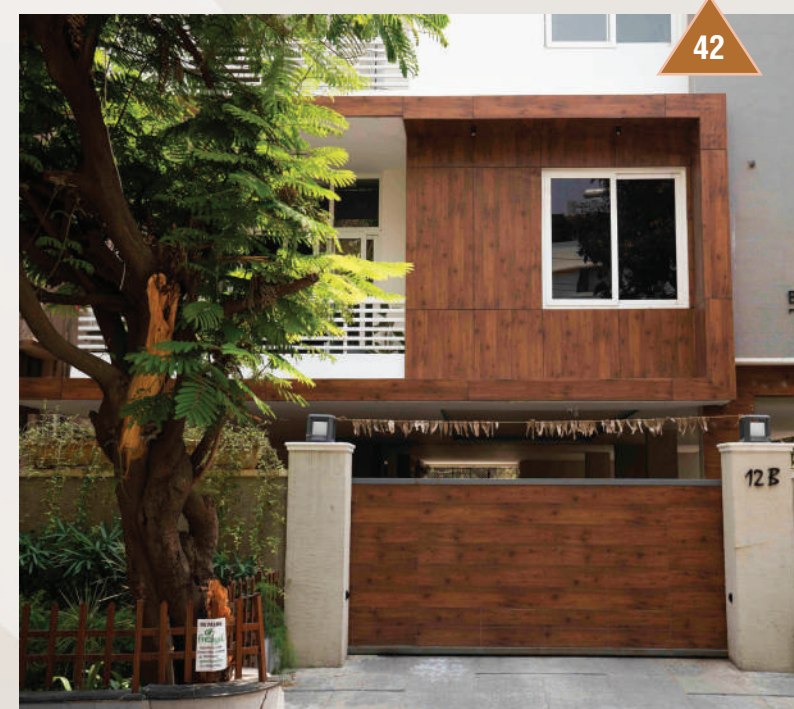


## RESIDENTIAL





# RESIDENTIAL



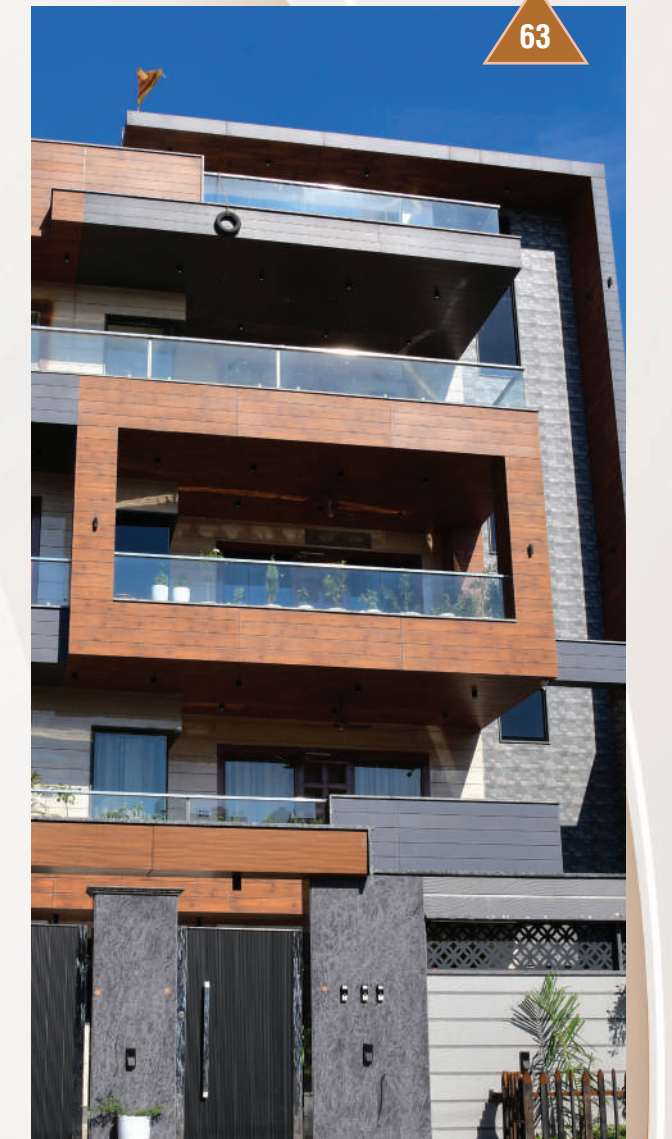


## RESIDENTIAL





## RESIDENTIAL





## RESIDENTIAL





## RESIDENTIAL



76



77



81



78



79



82



83



80



84



## RESIDENTIAL



85



86



87



88



89



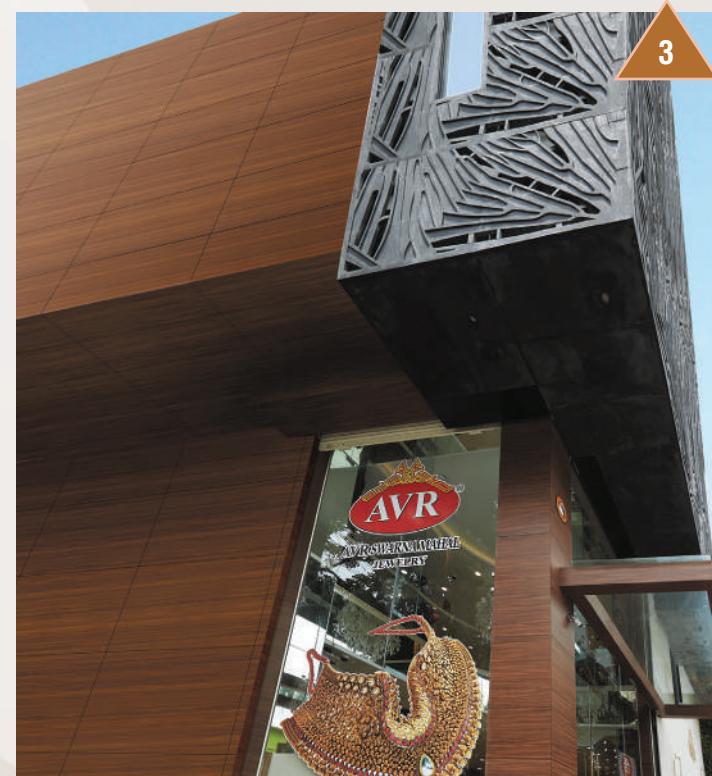
90



91



## COMMERCIAL



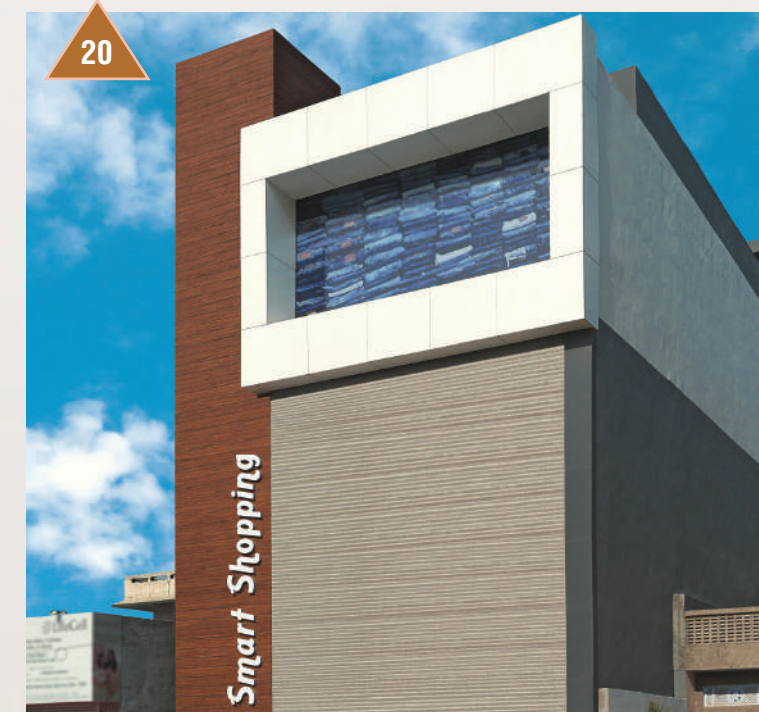


## COMMERCIAL





## COMMERCIAL





## COMMERCIAL





## COMMERCIAL





## CARE & MAINTENANCE

Store in a dry, clean, frost-free room.

CenturyExteria HPL sheets must be stacked horizontally.

A levelled surface which can provide full and uniform support to the pallets on which CenturyExteria HPL sheets will be placed during storage, should be made available.

Dirt, dust or any abrasive material in any form must always be avoided on or between CenturyExteria HPL sheets.

Store CenturyExteria HPL sheets in the original, closed packaging wherever possible.

Do not place any moisture-sensitive separator layers between the CenturyExteria HPL sheets. If required, use plastic sheets as intermediate layer

Treat CenturyExteria HPL sheets with care. Suitable protective hand gloves must always be worn while handling.

CenturyExteria HPL sheets should not be slid over another or pushed/pulled over edge while they are being carried or loaded. During transportation always lift the sheets.

The peel off film should be ideally removed within 14 days of installation of the panels.

## STORAGE & HANDLING

CenturyExteria HPL panel surfaces can be cleaned with a damp cloth and mild detergent (baby shampoos, liquid dish washing detergents, liquid soaps etc.). After cleaning, a thorough rinsing and drying is required.

Don't use any strongly acidic or alkaline based solvent, bleach, heavily chlorinated product or furniture polish as cleaning agent; these agents can discolour the UV protective film on the panel.

Any kind of abrasive cleaner, powder, scouring pad, steel wool, chisel, sandpaper, brush having hard rigid bristles etc. should never be used; this can leave permanent scratch marks on the laminate and irreversibly damage the finish.

Solvents having polyurethane lacquer, paint thinner and nail polish remover must not be used, as these solvents can have adverse effects on the UV protective film.

Note: Any kind of improper or incorrectly performed cleaning will make the warranty void.

## CREDENTIALS

## CERTIFICATIONS OF COMPLIANCE



**CENTURY  
PLYBOARDS  
(INDIA) LIMITED**

CenturyLaminates Exterior  
Grade Compact

Certificate Number  
17649-410

Status  
Certified

UL 2818 - 2013 Standard for Chemical Emissions for Building Materials, Finishes and Furnishings

Building materials are determined compliant in accordance with an Office environment with an air change of 0.68 hr-1 and a loading of 3.20 m2. Products tested in accordance with UL 2821 test method to show compliance to emission limits in UL 2818, Section 7.1



Environment

UL Environment investigated representative samples of the identified Product(s) to the identified Standard (s) or other requirements in accordance with the agreements and any applicable program service terms in place between UL Environment and the Certificate Holder (collectively "Agreement"). The certificate Holder is authorized to use the UL Environment Mark for the identified Product(s) manufactured at the production site(s) covered by the ULE Test Report, in accordance with the terms of the Agreement. This Certificate is valid for the identified dates unless there is non-compliance with the Agreement.



The mark of  
responsible forestry



European  
Standard  
**EN 438**

\* FSC certified products are available on request.



Design Index

Design No.	Design Name		Page No.	Design No.	Design Name		Page No.
101	WHITE	●	35	541	SAPALI		19
107	SNOW WHITE	●	35	555	<div>NEW</div> BELGIAN CEDAR		15
108	OFF WHITE	●	35	609	<div>NEW</div> BORAS ASH		15
109	DESIGNER WHITE	●	35	639	SUKUPIRA PRADO	●	19
121	IVORY		35	657	MARINE WALNUT		24
125	MYSORE IVORY	●	35	688	PRETTY WOOD	●	18
127	ALMOND IVORY	●	35	738	HASTINGS SANDALWOOD		17
153	<div>NEW</div> PUNCH		37	784	WILD ZEBRANO		15
158	TAUPE	●	35	787	ZEBRA WOOD		16
161	LIGHT BEIGE		35	3233	CONCRETE GREY	●	36
165	PEACH		35	3245	<div>NEW</div> ARCTIC BLUE		38
168	<div>NEW</div> BRAZILIAN SAND		37	3246	<div>NEW</div> FLINT		38
172	MUDDY MUSHROOM		35	3342	CLARO MAPLE		18
178	<div>NEW</div> CAMEL		38	3408	PYRUS OSCURO	●	18
181	VINTAGE BURGUNDY	●	35	3418	DECO WALNUT DARK BROWN		23
202	TAWNY		35	3419	DECO WALNUT LIGHT BROWN	●	23
208	GLAZE YELLOW		35	3425	SAPWOOD WALNUT DARK BROWN		23
209	EQUINOX YELLOW		35	3531	TYROL PINE	●	15
221	LIGHT GREY	●	35	3594	BAVARIAN ASH GREY		18
225	SILVER GREY	●	35	3639	OAK NOMADA		21
226	WARM GREY	●	35	3743	AFRICAN OAK NOIR		21
227	MOON GREY	●	35	3802	PARDO REYRA		29
228	ALLU GREY	●	35	3809	SAHARA	●	28
231	GREY	●	36	3819	STEEN CEMENT	●	27
234	BLUISH GREY		36	3835	GRANUM TAUPE	●	30
238	GRAPHITE GREY	●	36	3836	BARK STONE	●	30
243	SKY BLUE		36	3846	WHITE MARBLE		32
245	<div>NEW</div> BLUE		36	3852	SAGRADA MARBLE		31
249	NAVY BLUE	●	36	3853	GOTHIC MARBLE		31
259	DAWN BLUE		36	3854	SIERRA MARBLE		32
274	DESERT GREEN		36	3893	<div>NEW</div> MOCHA		30
276	PISTA GREEN		36	3894	<div>NEW</div> MOONLIT CHARCOAL		32
281	STEEL GREEN	●	36	3896	RUSTICO	●	29
287	HAWAIIAN GREEN		36	4523	<div>NEW</div> PEMENANG WALNUT		22
321	CHERRY BEECH	●	19	4527	LEPING WALNUT		23
403	WILD PEAR	●	16	4655	KOHI VISGRAT		17
419	RECLAIMED WALNUT	●	22	4656	GURE VISGRAT		17
424	ERMANNIO WALNUT		24	4664	NAMBIA OAK	●	21
456	SAMOA TEAK	●	20	4683	<div>NEW</div> BUNRATTY OAK		21
464	NYANA TEAK	●	20	4841	STELLARNOVA		28
468	MAHOGANY		19	4842	SUPERNOVA		27
494	NYANA ROSE	●	17	4867	TULA SILVER		29

● Also available in 10 ft. x 4.25 ft. panel size.

Technical data sheet

EXTERIOR GRADE HIGH PRESSURE COMPACT LAMINATE

Size: 2440 mm. x 1220 mm.

Sl. No.	EDF Grade Specification		CenturyExteria EDF (Non Halogenated)
	Properties	As per EN 438-part 6	
1	Thickness (mm.)		
	5.00 ≤ t < 8.00 mm.	6.00 ± 0.40 mm.	6.00 ± 0.40 mm.
2	Length (mm.)	2440.00 <sup>+10.00 mm / - 0.00 mm</sup>	2440.00 <sup>+10.00 mm / - 0.00 mm</sup>
3	Width (mm.)	1220.00 <sup>+10.00 mm / - 0.00 mm</sup>	1220.00 <sup>+10.00 mm / - 0.00 mm</sup>
4	Max. Edge Straightness (mm.)	1.50 mm. / m.	≤ 1.00 mm. / m.
5	Max. Edge Squareness (mm.)	1.50 mm. / m.	≤ 1.00 mm. / m.
6	Max. Flatness (mm.)		
	6.00 ≤ t < 10.00 mm. (t = nominal thickness)	5.00 mm. / m.	≤ 5.00 mm. / m.
	t ≥ 10.00 mm.	3.00 mm. / m.	≤ 3.00 mm. / m.
7	Flexural Modulus ( Min. )	9000 M Pa	≥ 11,000 M Pa
8	Flexural Strength ( Min. )	80 M Pa	≥ 100 M Pa
9	Tensile Strength (Min. )	60 M Pa	≥ 70 M Pa
10	Density, gm. / cm <sup>3</sup> (Min.)	1.35 gm. / cm <sup>3</sup>	1.45 gm. / cm <sup>3</sup>
11	Resistance to impact by large diameter ball		
	a) Drop height, mm. (Min.)		
	t ≥ 5.00 mm. (t = nominal thickness)	1800.00 mm.	2000.00 mm.
	b) Indentation Dia., mm. (Max.)	10.00 mm.	≤ 10.00 mm.
12	Resistance to wet conditions		
	a) Mass increase % (Max.)		
	t ≥ 5.00 mm. (t = nominal thickness)	8%	3%
	b) Appearance (not worse than)	Rating 4	Rating ≥ 4
13	Dimensional stability at elevated temperature		
	t ≥ 5.00 mm.		
	a) Longitudinal, % (Max.)	0.30%	≤ 0.20%
	b) Transverse, % (Max.)	0.60%	≤ 0.40%
14	Resistance to climatic shock		
	a) Appearance	Rating 4	Rating 4
	b) Flexural Strength Index (Min.)	0.95	≥ 0.95
	c) Flexural Modulus Index (Min.)	0.95	≥ 0.95
15	Resistance to artificial weathering (including Light Fastness)	After 650 MJ / m <sup>2</sup> radiant exposure (3000 hrs.)	3000 hrs. passes
	a) Gray scale rating (not worse than)	Rating 3	Rating 5
	b) Appearance (Min.)	Rating 4	Rating 5
16	Resistance to UV light	After 1500 hrs. exposure	1500 hrs. passes
	a) Gray scale rating (not worse than)	Rating 3	Rating 5
	b) Appearance (Min.)	Rating 4	Rating 5
17	Spread of flame	Class 1	Class 1
Standard : ASTM E84			
18	Classification	Class	Class A
	Flame Spread Index	FSI 0 - 25	<25
	Smoke Developed Index	SDI 0 - 450	<450

Remark: E - Exterior Grade, D - Severe Use, F - Flame Retardant.

\* FSC certified products are available on request.



# OUR PRESENCE

## HEAD OFFICE

Sumit Roy  
M/S Century Plyboards (India) Limited  
Century House, P-15/1, Taratala Road,  
Kolkata-700088  
Ph. (033) 3940 3950  
E. sumit.roy@centuryply.com

## EAST

### KOLKATA

M/S Century Plyboards (India) Limited  
Abhishek Das, M 8296255871  
Lower Mezzanine Floor, 6 Lyons Range,  
Kolkata-700001  
Ph. (033) 3940 3950  
E. abhishek.das1@centuryply.com

### GUWAHATI

M/S Century Plyboards (India) Limited  
Abhishek Das, M 8296255871  
Sitangshu Sinha, M 7002945153  
House No - 24, Ground Floor,  
Piyali Phukan Road, Rehabari  
Guwahati - 781008  
Ph. (0361) 2737871  
E. abhishek.das1@centuryply.com  
E. sitangshu.sinha@centuryply.com

### BHUBANESWAR

M/S Century Plyboards (India) Limited  
S Debasis Mohanty, M 9439233742  
Angshuman Chaudhury, M 9851199185  
Plot No. 136, Mancheswar Industrial Estate  
Bhubaneswar-751017  
E. sd.mohanty@centuryply.com  
E. angshuman.c@centuryply.com

### PATNA

M/S Century Plyboards (India) Limited  
Faridul Beg, M 7044169544  
Ground Floor, Shivkunj Apartment,  
Behind Chandi Vyapar Bhawan, Exhibition  
Road, Patna-800001  
Ph. (0612) 3210071  
E. faridul.beg@centuryply.com

### RANCHI

M/S Century Plyboards (India) Limited  
Faridul Beg, M 7044169544  
Mahadev Path, DAV School Road,  
Near Kathalmore, Post-Lalghutwa,  
Ranchi-834005  
Ph. (0651) 2525417, 3245541  
E. faridul.beg@centuryply.com

## WEST

### MUMBAI

M/S Century Plyboards (India) Limited  
Ashish Kumar Singh, M 8767915906  
1501-1506, Range Heights, 15th Floor,  
Link Road, Oshiwara, Behram Baug,  
Jogeshwari-West, Mumbai-400102  
Ph. 9920801730 Fax: (022) 39403950  
E. ashish.singh@centuryply.com

### PUNE

M/S Century Plyboards (India) Limited  
Sambit Kumar Das, M 7972567835  
Office No. 402, Winners Court 4th Floor,  
Above ZK's Restaurant Lulla Nagar Chowk,  
Pune-411040  
Ph. (020) 26831140 Fax: (020) 24471140  
E. sambitk.das@centuryply.com

## NAGPUR

M/S Century Plyboards (India) Limited  
Rakesh Puri, M 8602867665  
C/O Dr. K.S Yawalkar, 2nd Floor, R/D 52  
Bajaj Nagar, Above Vodafone Gallery,  
Nagpur - 440010 (M.S.)  
Ph. (0712) 3223921, 3223922  
E. rakesh.puri@centuryply.com

## INDORE

M/S Century Plyboards (India) Limited  
Puneet Kumar, M 9811711522  
96/1/11, S. R. Compound, Opposite  
Lasudiya Police Station, Lasudiya Mori,  
Dewas Naka, 1st Lane, Indore - 452010  
Ph. (0731) 3228122, 3221621  
E. puneet.k@centuryply.com

## AHMEDABAD

M/S Century Plyboards (India) Limited  
Dishank B Parekh, M 6292215464  
1006-1009, Sakar III, 10th Floor, Near  
Income Tax Circle, Ashram Road,  
Ahmedabad-380014  
Ph. (079) 39403950 Fax: (079) 27540900  
E. dishank.bparekh@centuryply.com

## SURAT

M/S Century Plyboards (India) Limited  
Dishank B Parekh, M 6292215464  
305, Royal Trade Center, Third Floor,  
Opp. Star Bazar, Adajan, Surat-395009  
E. dishank.bparekh@centuryply.com

## NORTH

### DELHI

M/S Century Plyboards (India) Limited  
Abhishek Kumar M. 9073388461  
1/15, First Floor, Opposite DDA Park, WHS  
Kirti Nagar, New Delhi - 110015  
Ph. (011) 46081444  
E. abhishek.kumar@centuryply.com

### GURGAON

M/S Century Plyboards (India) Limited  
Ratnakar Dubey M. 8630685105  
16A,16B 1st Floor Vyapar Kendra Market,  
Sushant Lok Phase-1, Gurgaon-122002  
E- Ratnakar.Dubey@centuryply.com

### GHAZIABAD

M/S Century Plyboards (India) Limited  
Kaushik Pant, M 8130905158  
C 21, Meerut Road Industrial Area,  
Near DPS School, Ghaziabad-201003 (U.P)  
Ph. (0120)3140921, 3141322, 4205605  
E. kaushik.pant@centuryply.com

### LUCKNOW

M/S Century Plyboards (India) Limited  
Arun Kumar Singh, M 9076659772  
E/1-139 Phase 2, Opposite Parking No 07,  
Transport Nagar, Lucknow-226012  
E. arunkumar.singh@centuryply.com

### LUDHIANA

M/S Century Plyboards (India) Limited  
Anish Tiwari, M 9803003334  
Shorabh Sharma, M 9877254477  
Shop No.-58, 1st Floor, New Grain Market,  
Gill Road, Dana Mandi, Ludhiana -141003  
Ph. (0161) 5059825, 50561025, 505702  
E. anish.tiwari@centuryply.com  
E. shorabh.sharma@centuryply.com

### JAIPUR

M/S Century Plyboards (India) Limited  
Kamlesh Kumawat, M: 9610000660  
Plot No. B-140 B, Road No.-9, Behind V.K.I. Area Police  
Station, Vishwakarma Industrial Area,  
Jaipur-302013  
Tel (0141) 3064500 & 3064512  
E. kamleshk.kumawat@centuryply.com

## SOUTH

### BENGALURU

M/S Century Plyboards (India) Limited  
Sabyasachi Barik, M 9620077781  
Sourish Bhattacharya, M 9513335228  
(Rest of Karnataka)  
# Plot No.129, Railway Parallel Road,  
Kumarapark West, Seshadripuram,  
Bengaluru-560020  
Ph. (080) 39403950  
E. sabyasachi.barik@centuryply.com  
E. sourish.bhattacharya@centuryply.com

### HUBLI

Sabyasachi Barik, M 9620077781  
M/S Century Plyboards (India) Limited  
No 185 5th Main Cross Murarji  
Nagar Gokul Road, Hubli-580027  
E. sabyasachi.barik@centuryply.com

### COIMBATORE

M/S Century Plyboards (India) Limited  
Abhilash Kumar, M 7799844495  
S Krishnan, M 9600913444  
SF No.: 396, 1/B, 8/30, Jayasudhaa  
Warehouse, Ayyan Thottam, G. N. Mills  
Post, Coimbatore - 641029  
Ph. (0422) 9025844135, 7601805123  
E. abhilash.kumar@centuryply.com  
E. s.krishnan@centuryply.com

### CHENNAI

M/S Century Plyboards (India) Limited  
Abhilash Kumar, M 7799844495  
Sapna Trade Centre - 4th Floor, No.137,  
Poonamalle High Road, Landmark- near  
Dasprakash Hotel, Chennai - 600 084.  
Ph. (044) 30544500 Fax: (044) 26692455  
E. abhilash.kumar@centuryply.com

### HYDERABAD

M/S Century Plyboards (India) Limited  
Abhilash Kumar, M 7799844495  
No. 405A, Minerva Commercial Complex  
Near Paradise Junction, SD Road,  
Secunderabad-500003  
Ph. (040) 39403950  
E. abhilash.kumar@centuryply.com

### KOCHI & KOZHIKODE

M/S Century Plyboards (India) Limited  
R. Rajesh Kumar, M 9620045669  
Pravin Kumar P, M 9061337976 (Kozhikode)  
24-B Alakalathil Building, Ground Floor,  
Marottichuvadu, Edapally PO,  
Kochi-682024  
E. r.rajeshkumar@centuryply.com  
E. pravinkumar.p@centuryply.com

### VIJAYAWADA

M/S Century Plyboards (India) Limited  
Abhilash Kumar, M 7799844495  
Sajjath Ali Sheik, M 9154151040  
76-4-2/a 2nd floor (North)  
Suffala Building St.Bhavani Puram.  
Vijaywada - 520012  
E. shaiksajjath.ali@centuryply.com  
E. abhilash.kumar@centuryply.com

## Product Sample, 6mm

## Product Sample, 5mm

Also available in 4mm, 8mm, 12mm, 15mm and upto 18mm thickness